

TOBIN CENTER FOR THE PERFORMING ARTS



Laura Ashley A. Alferes | Lighting Schematic Design Presentation | 11.11.13

STATISTICS

Name: Tobin Center for the Performing Arts

Location: San Antonio, TX

Size: 172,970 sf

Levels: 6 + 1 basement

PROJECT TEAM

Architect of Record: LMN Architects

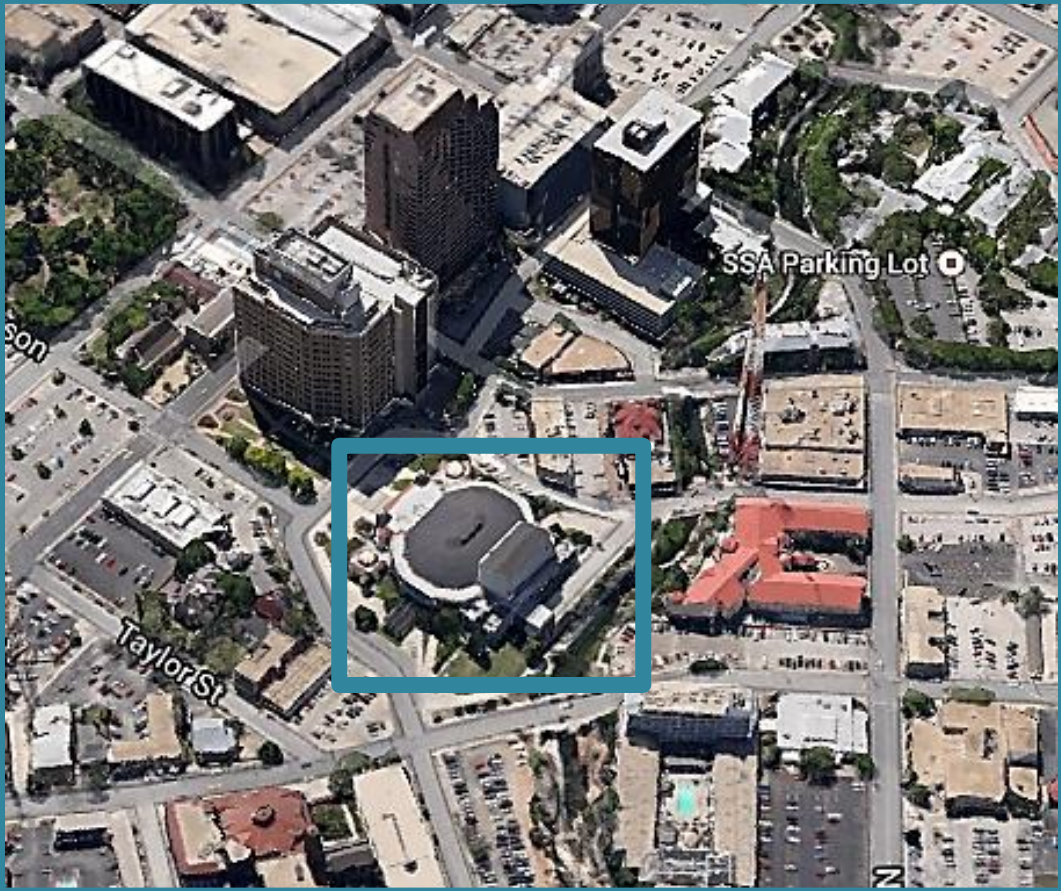
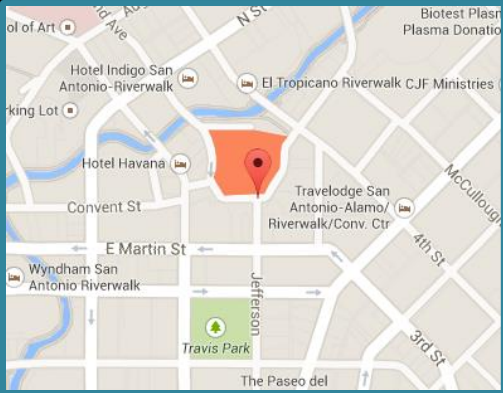
Construction Manager: Linbeck

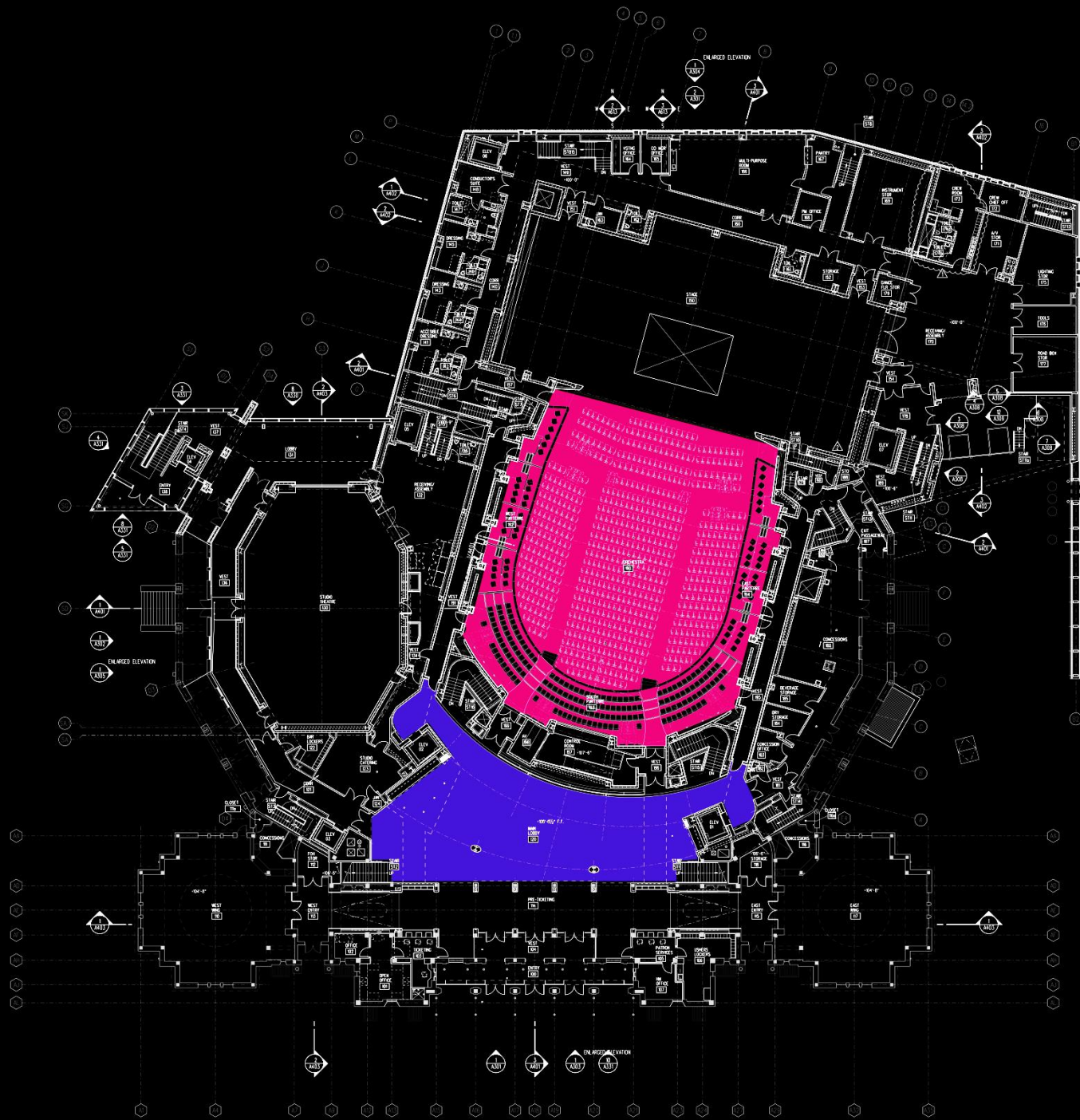
MEP: Timmons Designer Engineers, TTG Goetting

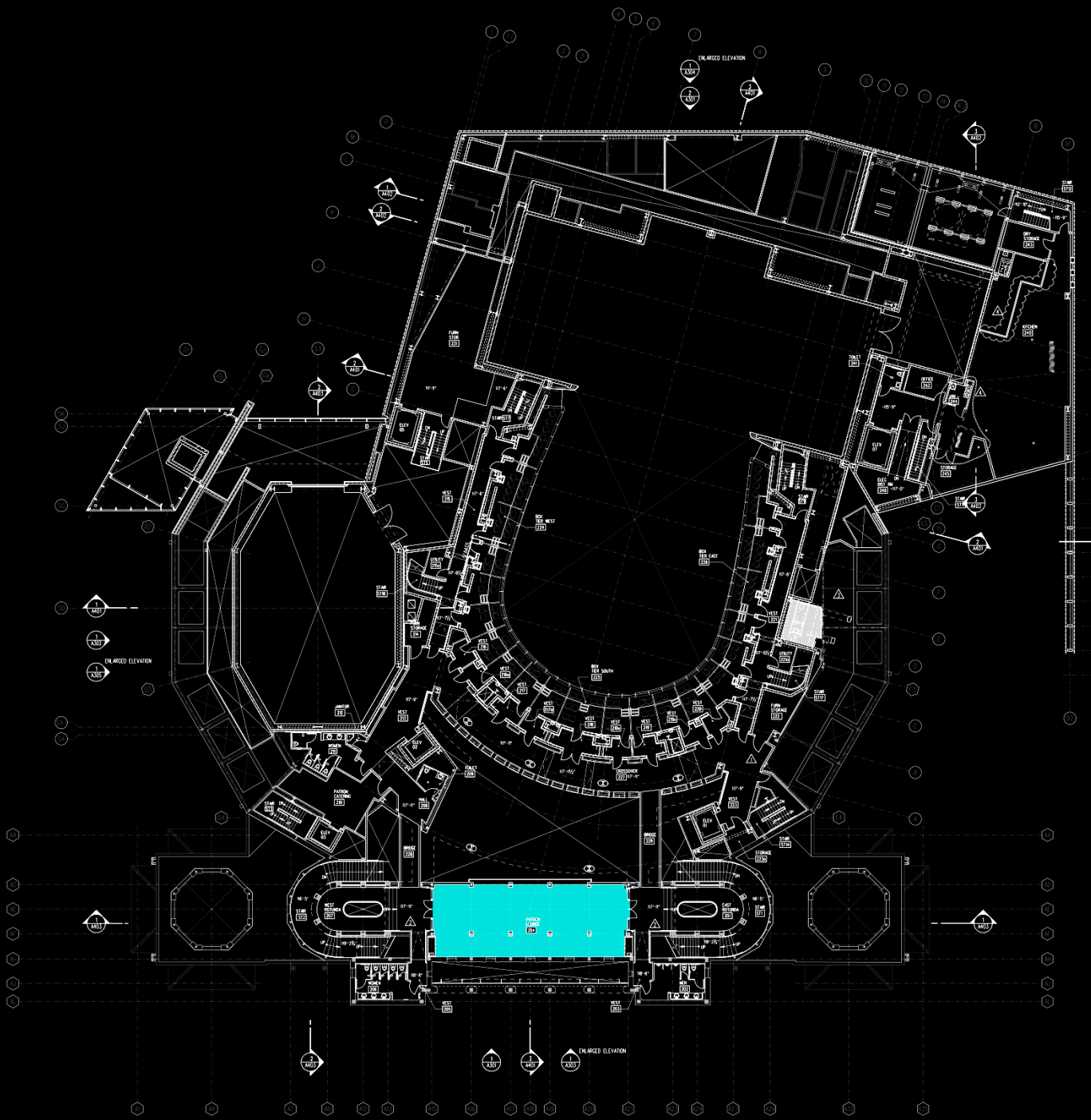
Lighting Designer: Horton Lees Brogden, Inc.

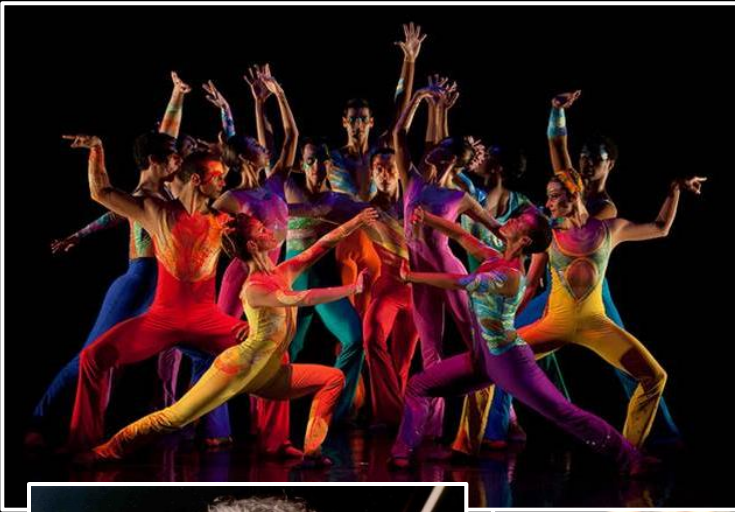


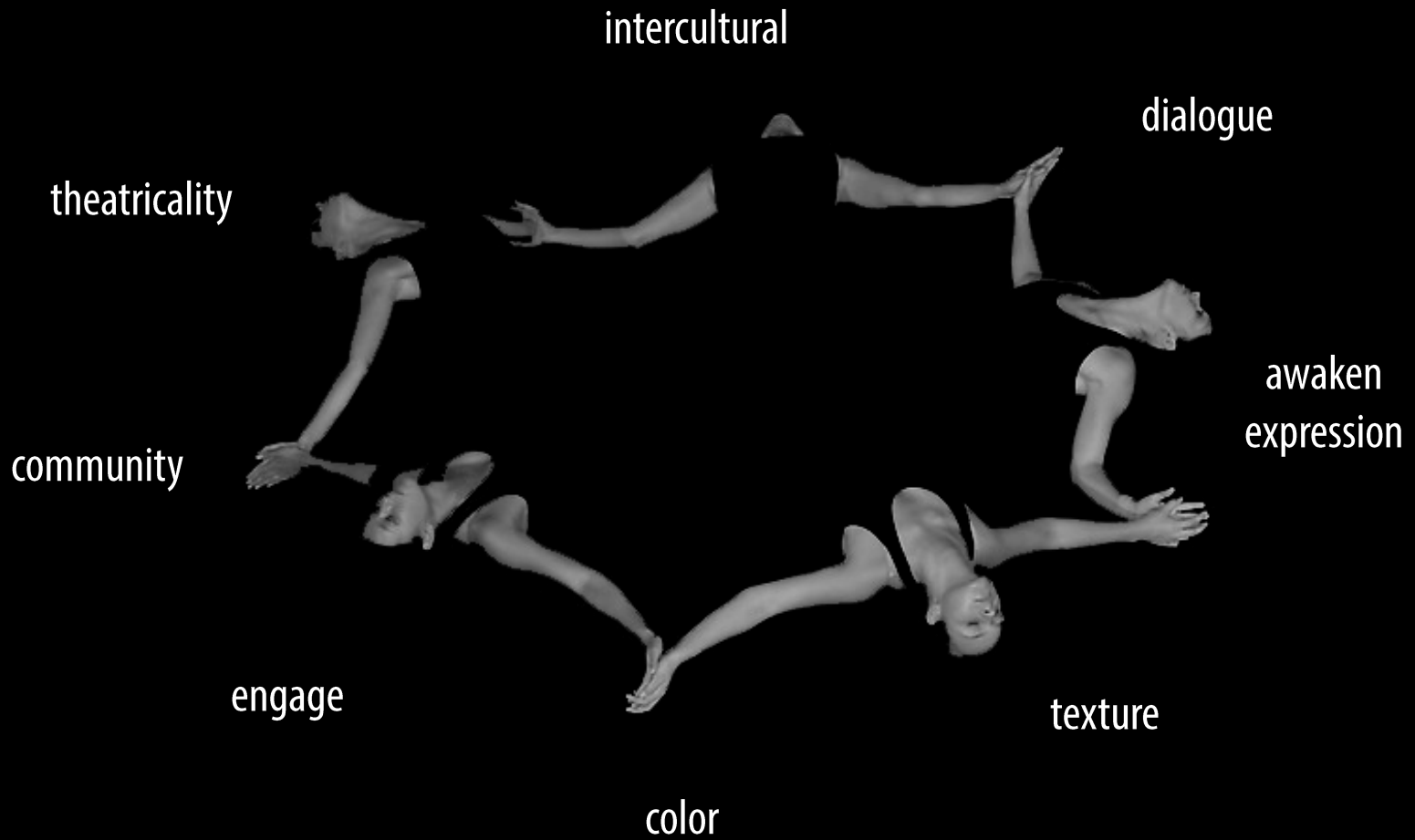
SAN ANTONIO, TX

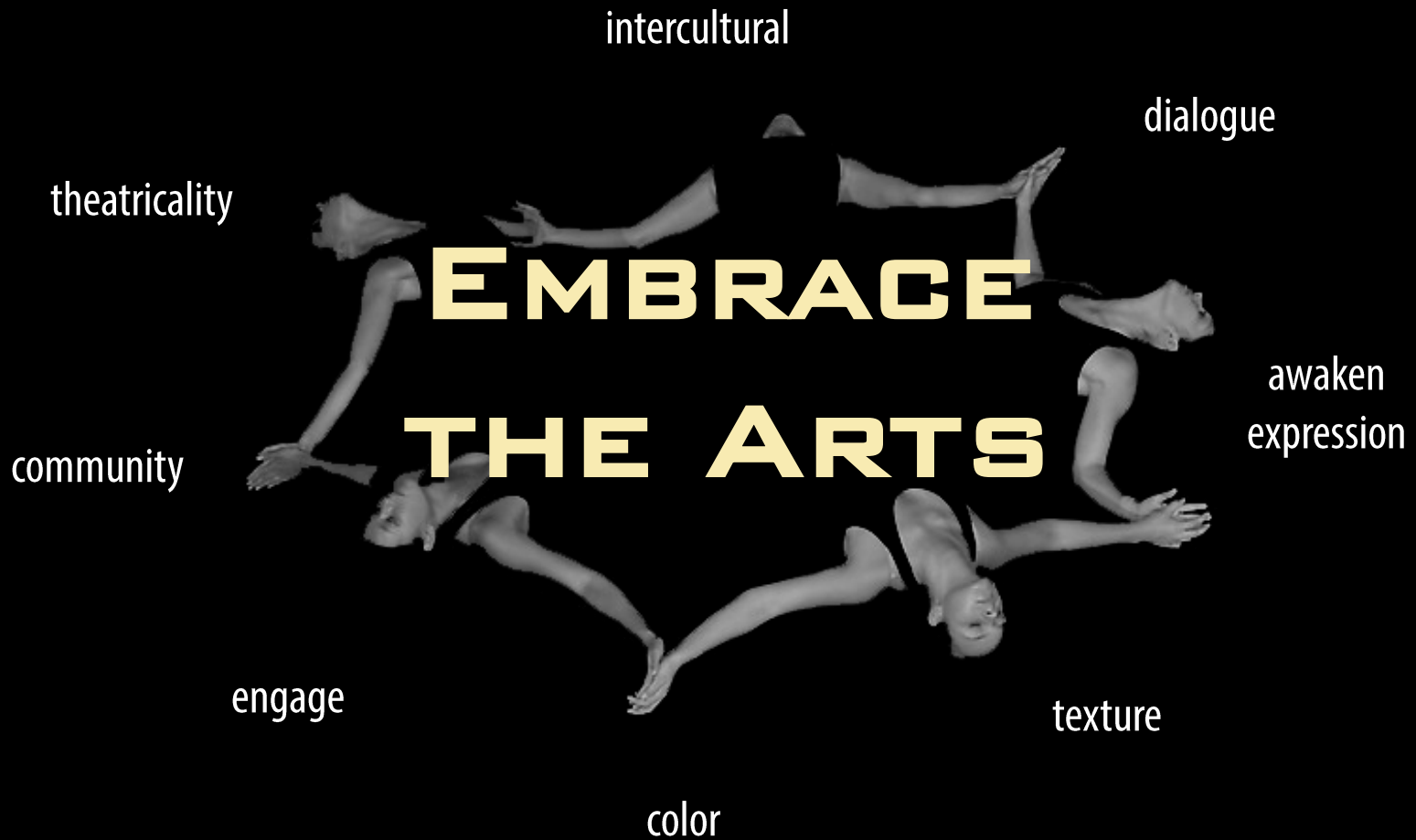








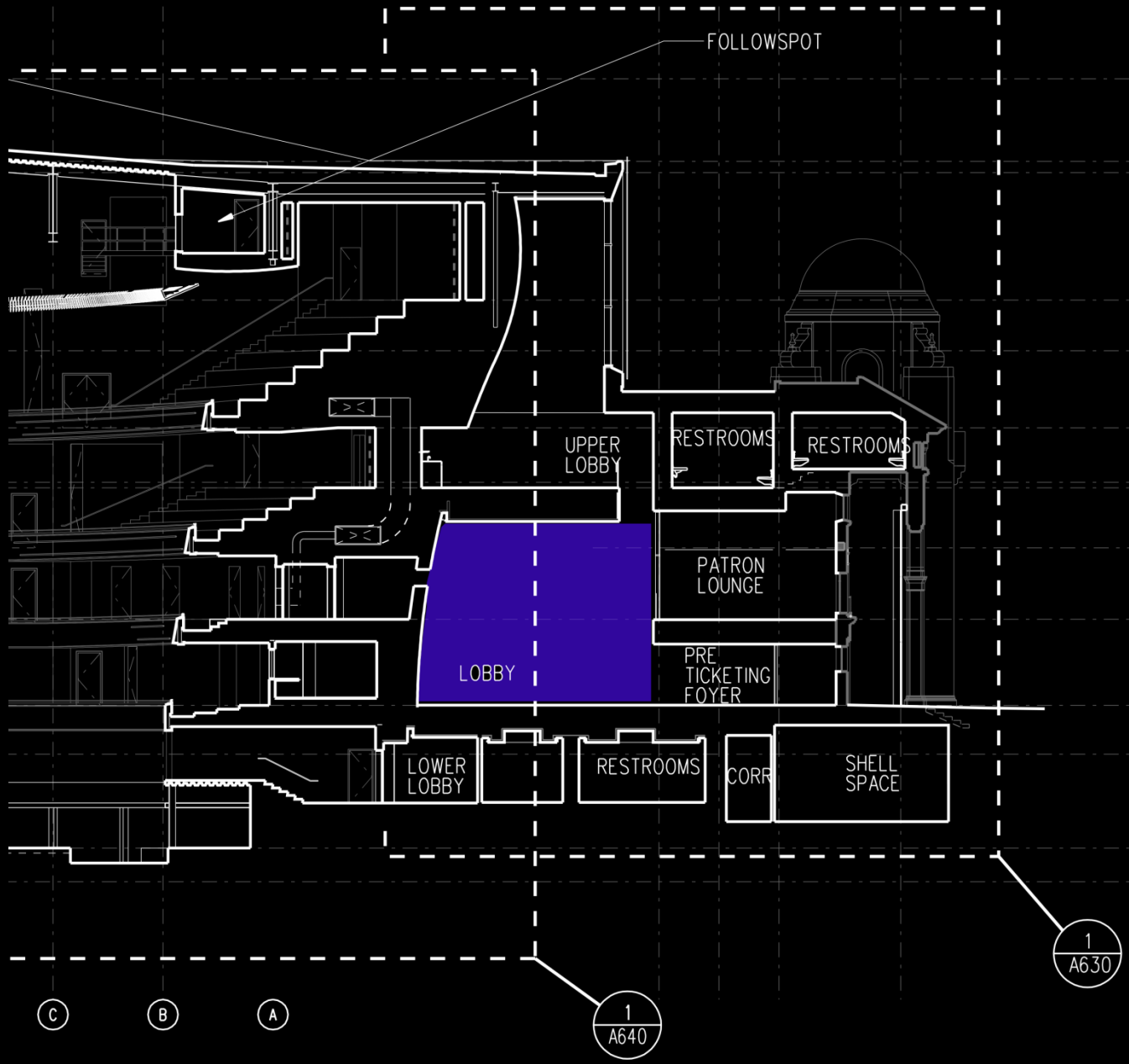




The image shows a detailed architectural floor plan of a building, rendered in a light gray color against a dark background. The plan features various rooms, corridors, and structural elements. A specific area in the lower-left quadrant of the plan is highlighted with a solid purple color. Overlaid on the center of the plan is the text "MAIN LOBBY" in a large, bold, white, sans-serif font.

MAIN LOBBY





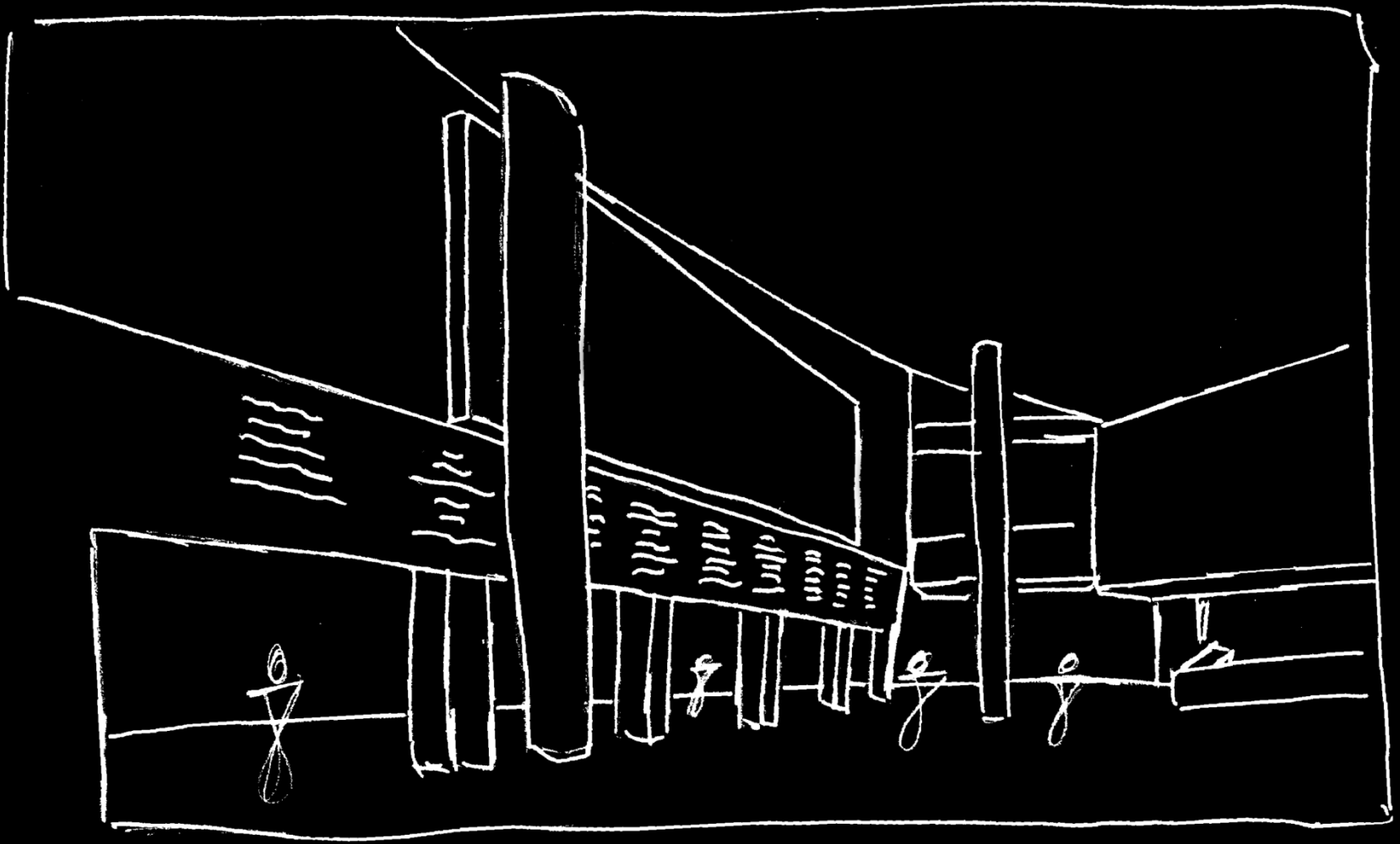
C

B

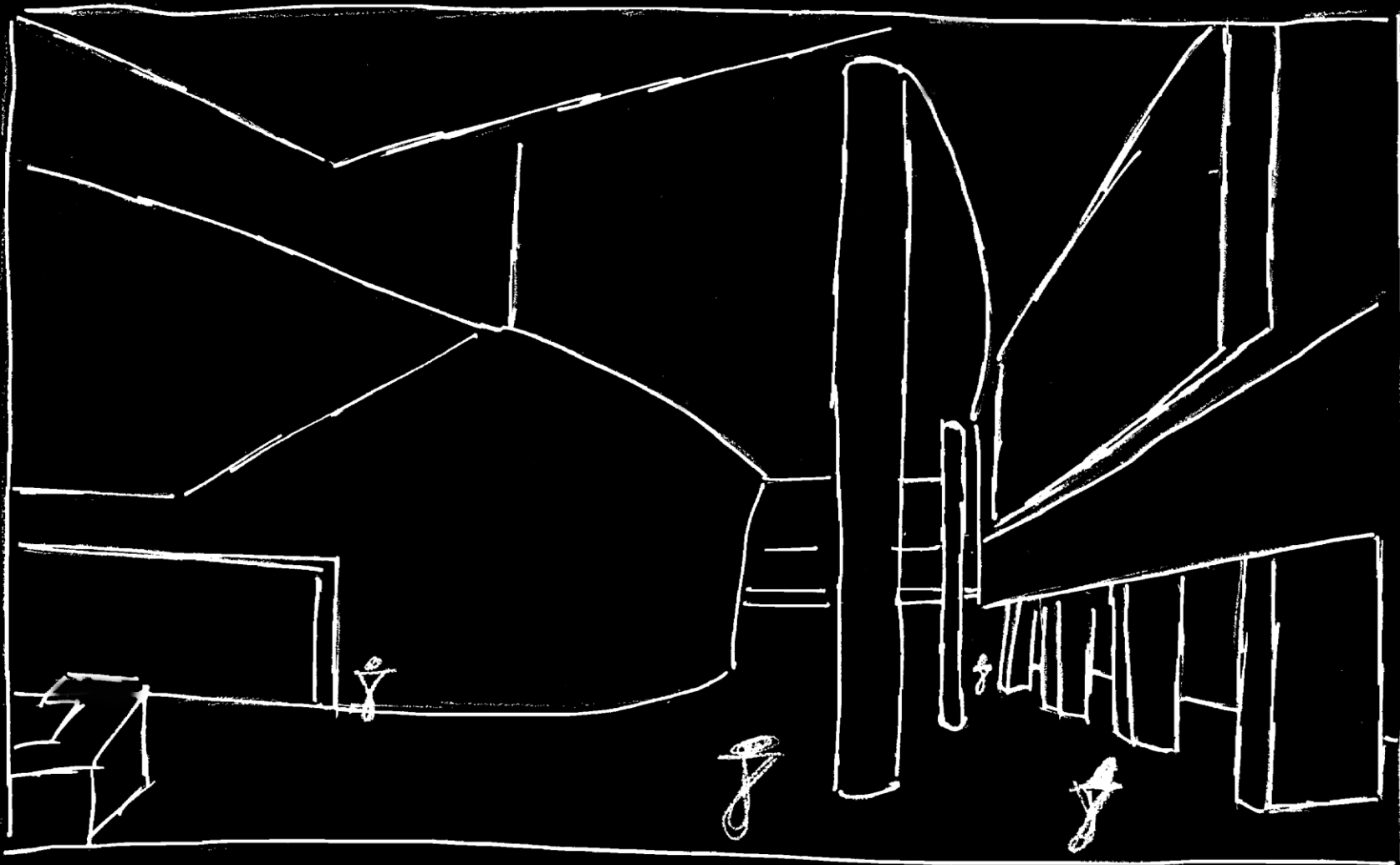
A

1
A640

1
A630



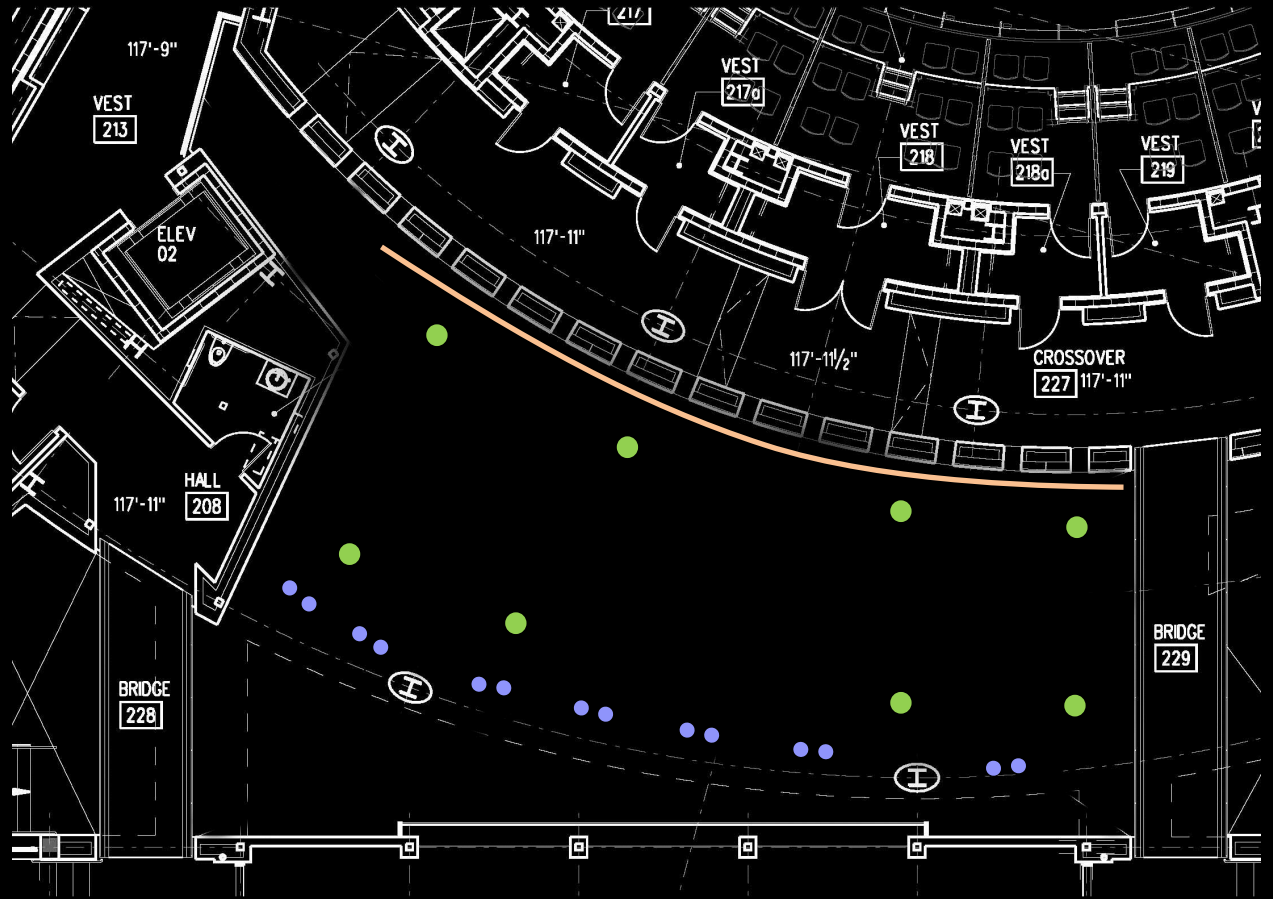
MAIN LOBBY - MASTER SKETCH "PERSPECTIVE"



MAIN LOBBY - MASTER SKETCH "PERSPECTIVE"



MAIN LOBBY - MASTER SKETCH "PERSPECTIVE"



1. THEATER



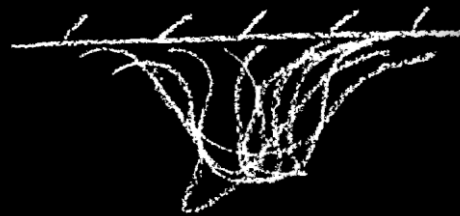
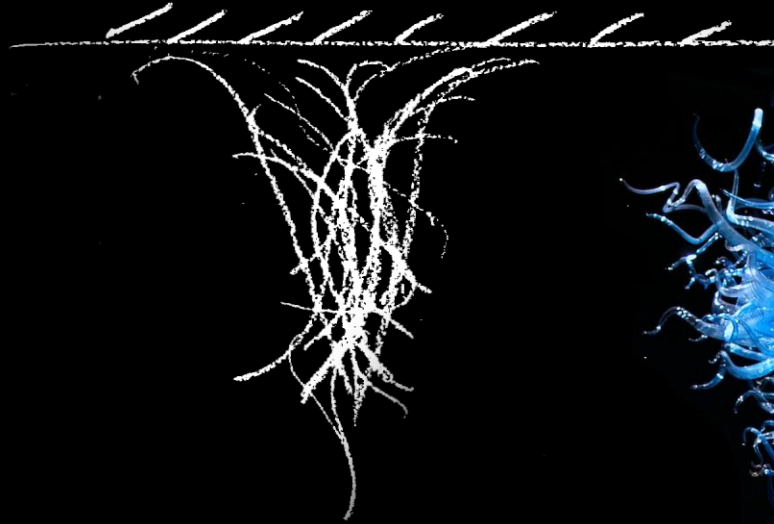
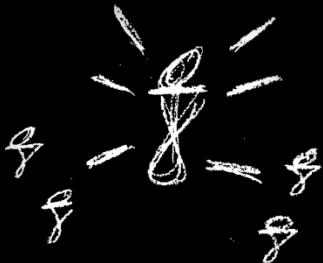
PROTAGONIST

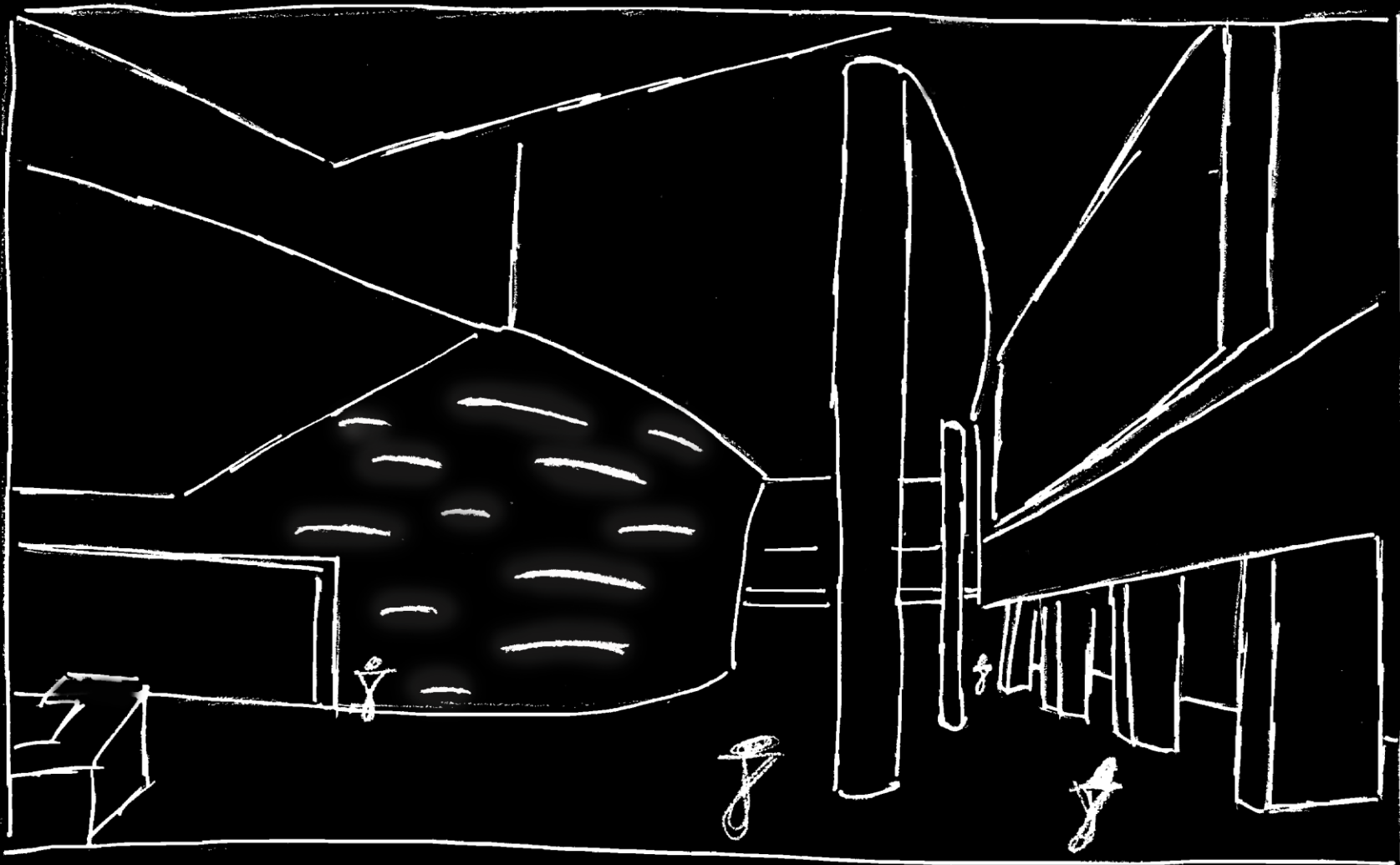
Performing Arts

- scenes in theater
- dramatic
- donor wall + curved wall represent actors
- space b/w walls represents a theater scene

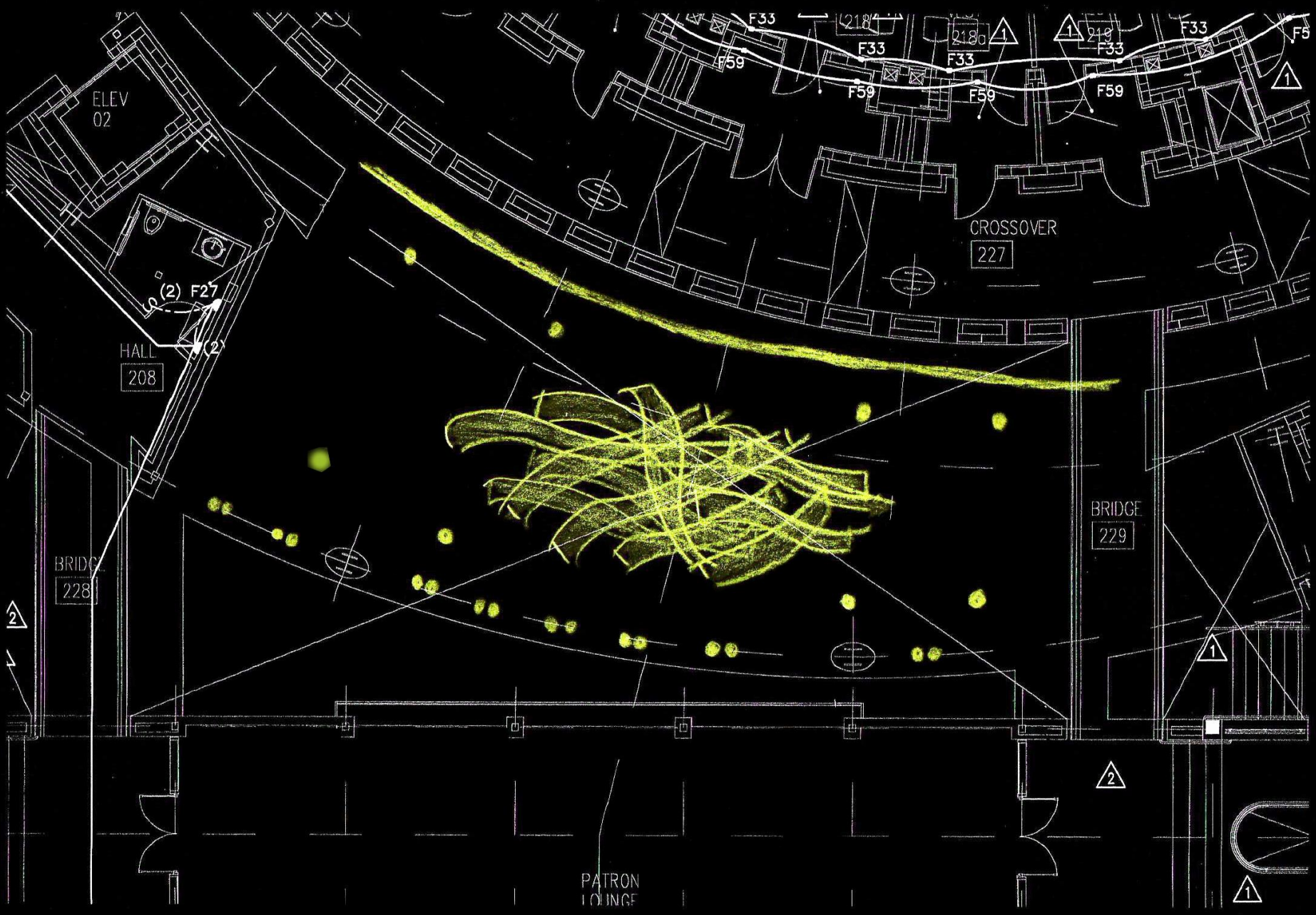
• protagonist

- characters
- eye-catching





MAIN LOBBY - MASTER SKETCH "PERSPECTIVE"



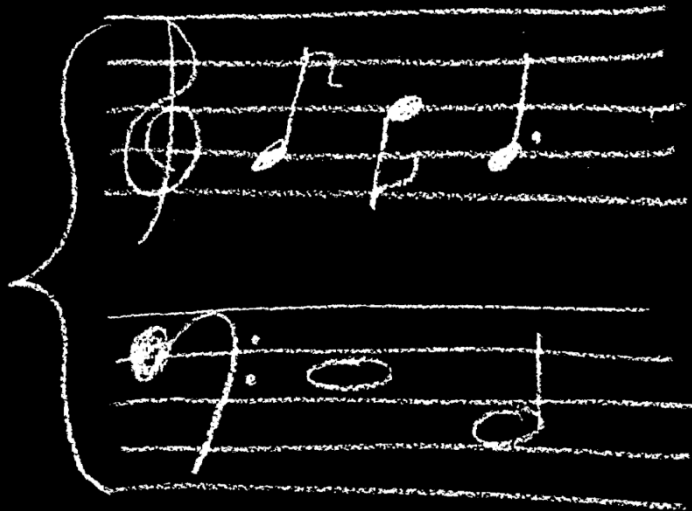
II. MUSIC

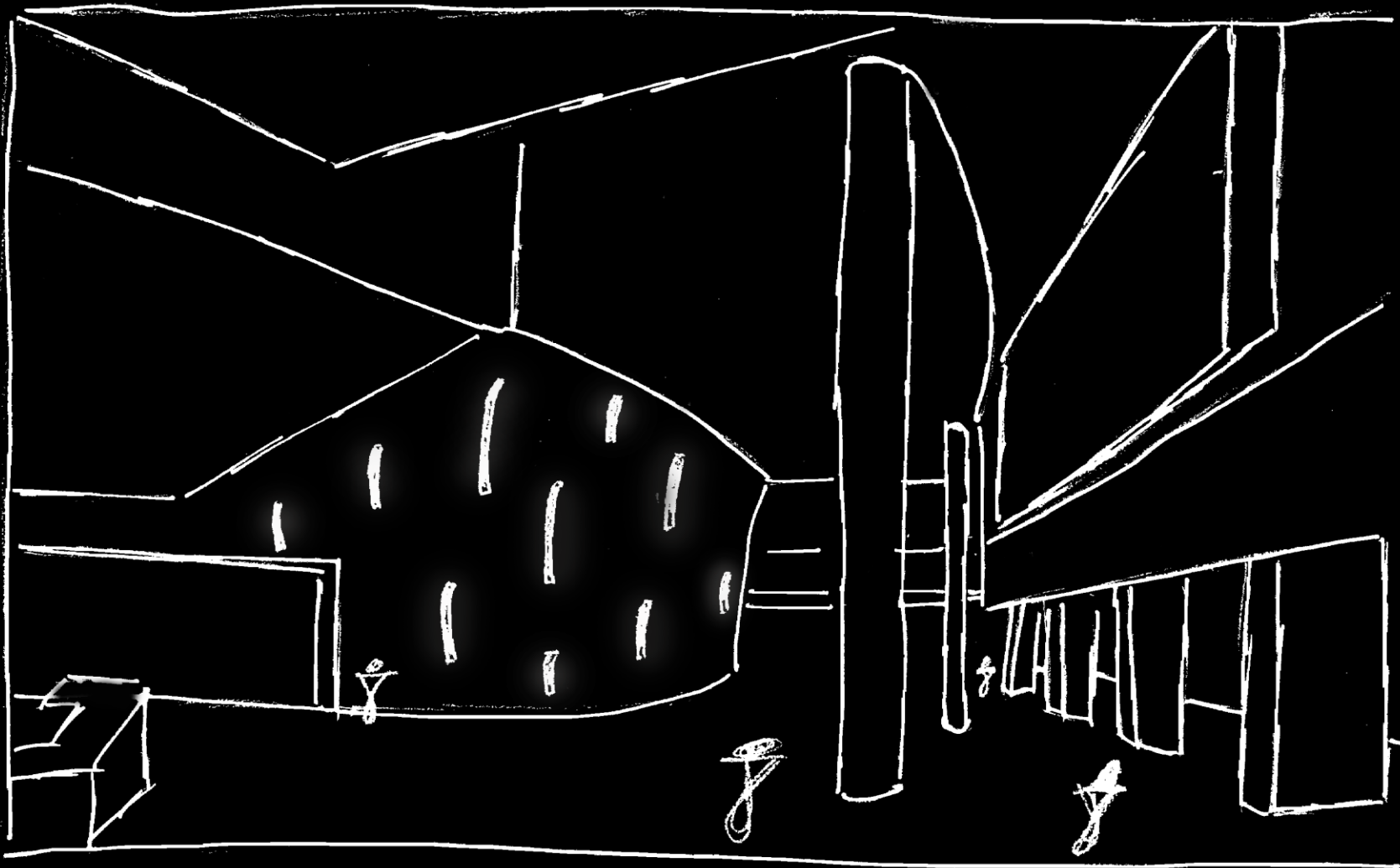


STRUCTURE

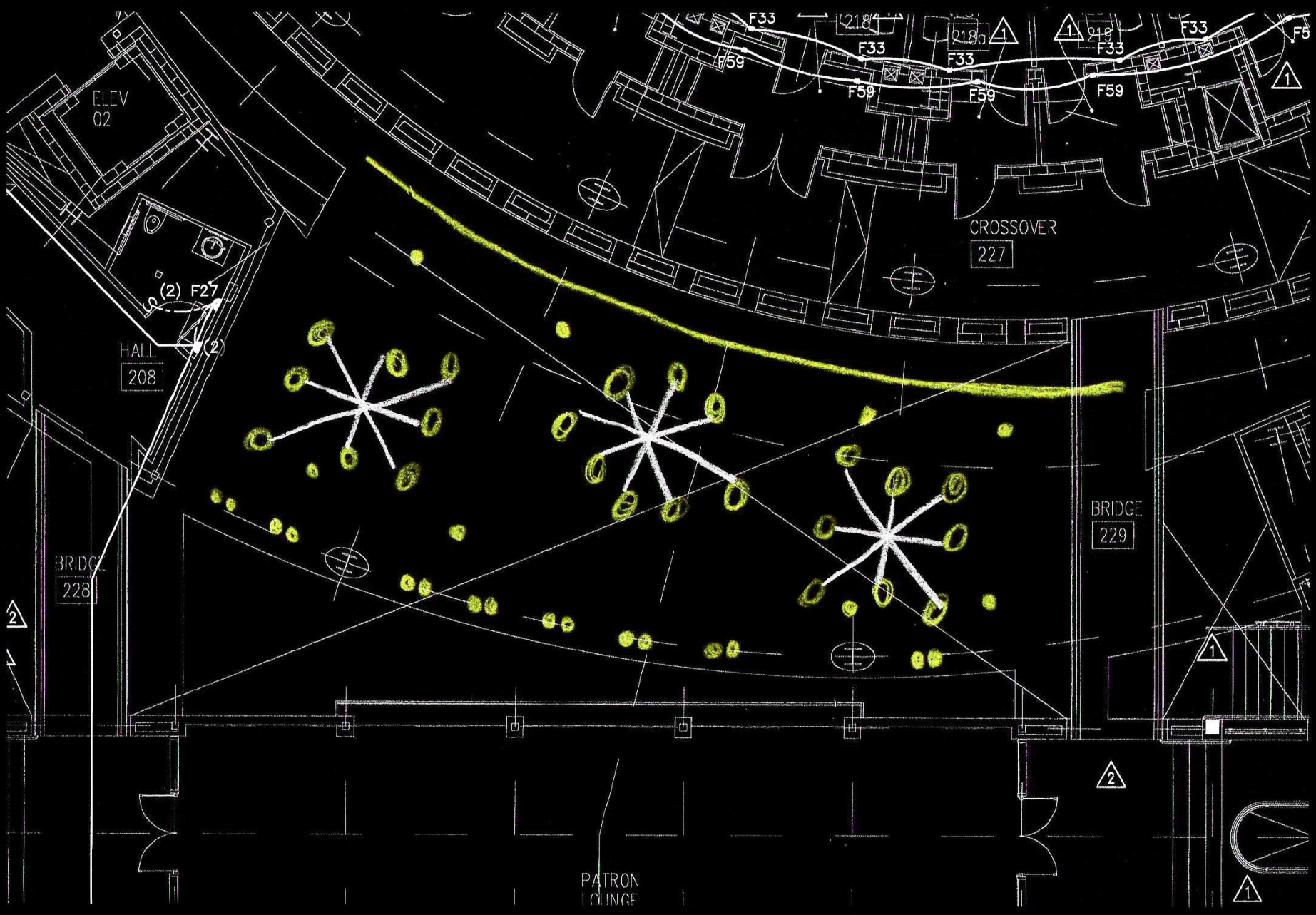
MUSICAL NOTES

- body
- stem
- melody
- harmony





MAIN LOBBY - MASTER SKETCH "PERSPECTIVE"



III. DANCE



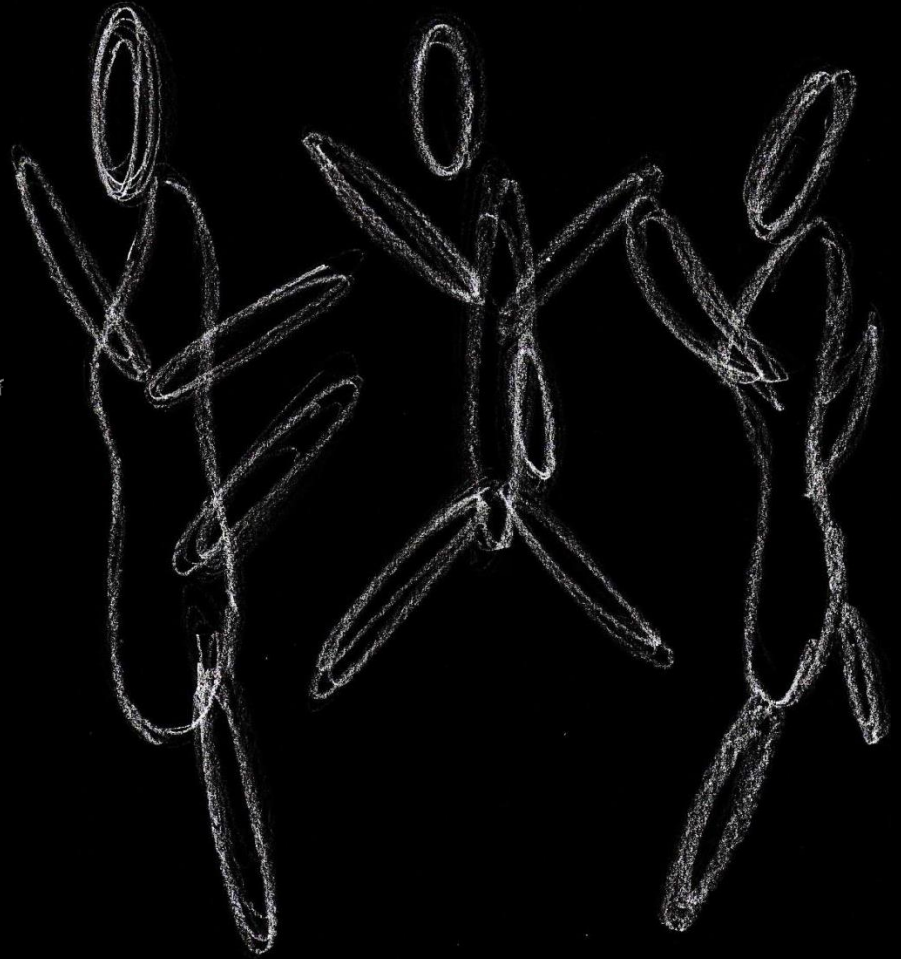
Photo courtesy of Jeff Busby

MOVEMENT

lighting (points of interest)

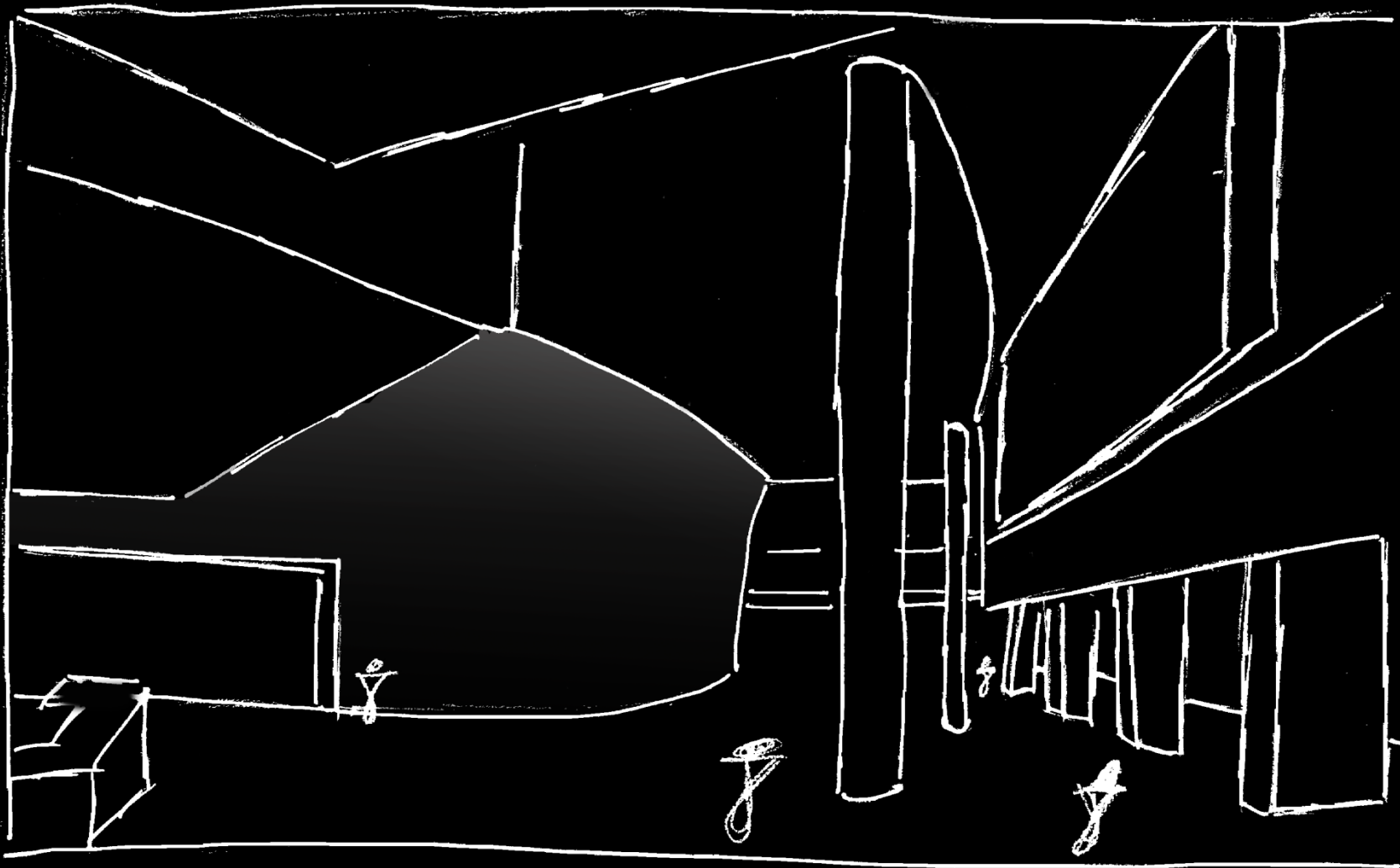
- donor wall
- curved wall
- downlights
- continuous light

- provides direction / way. Andir
- guides the eyes

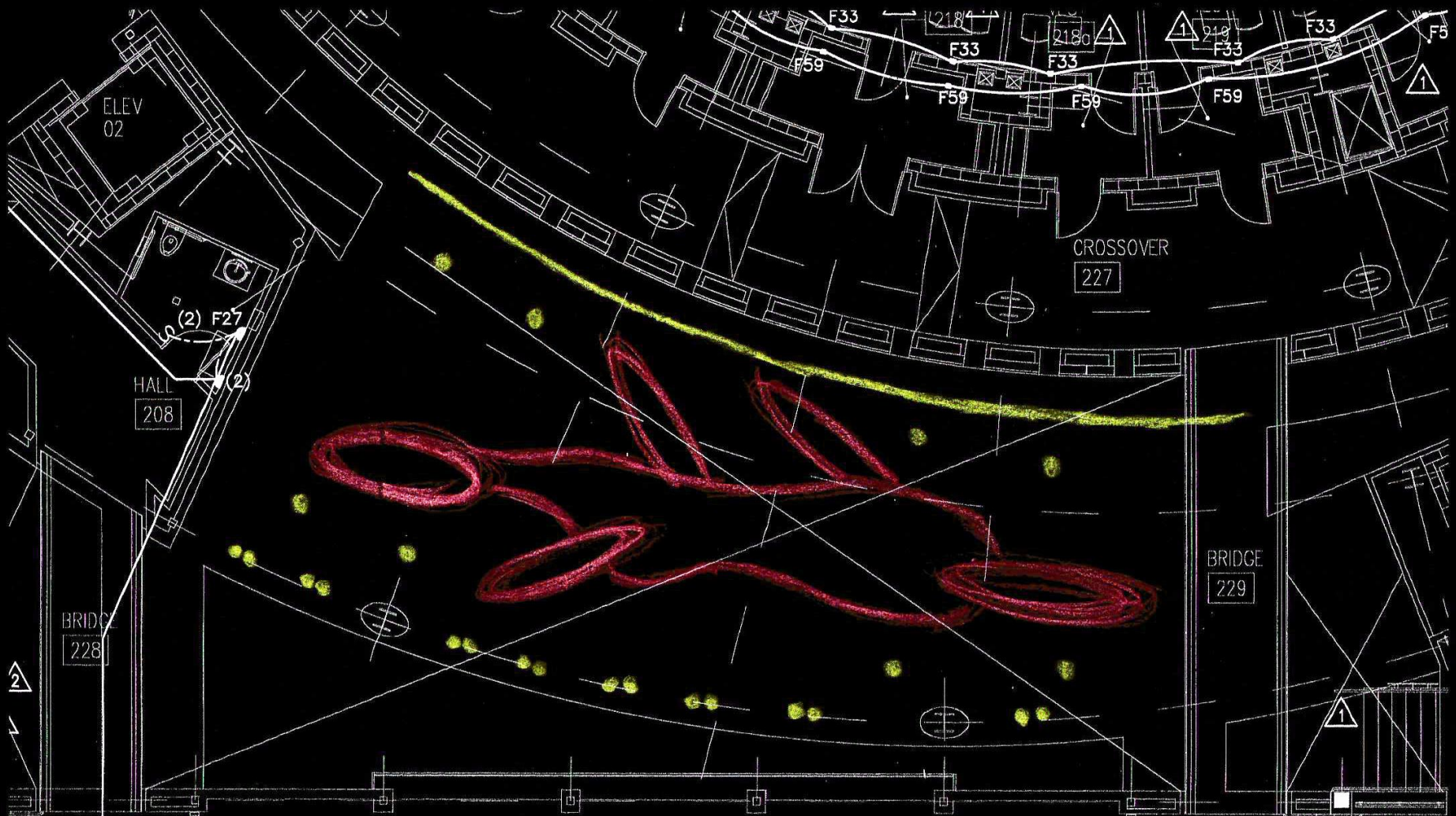


performing arts

- movement
- dynamic

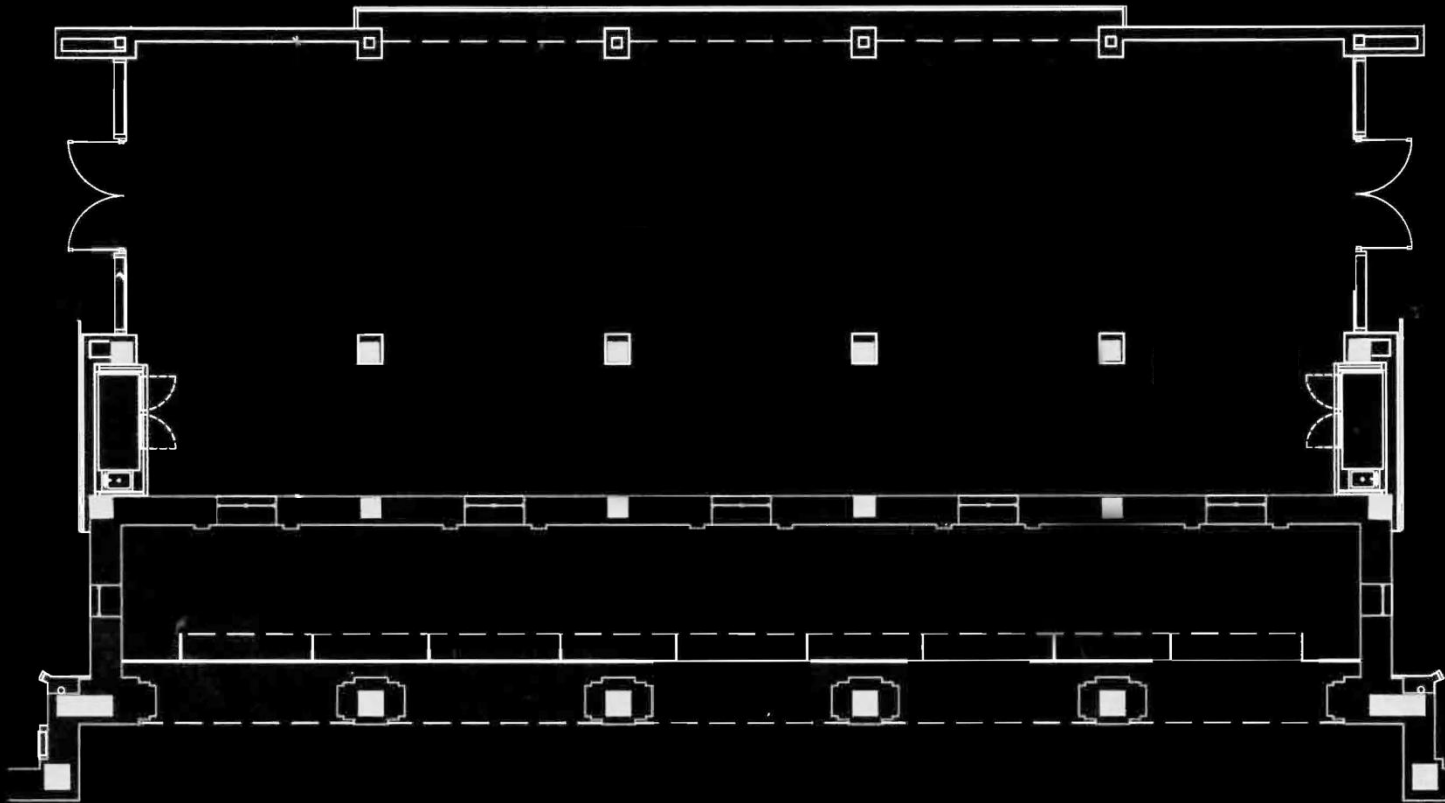


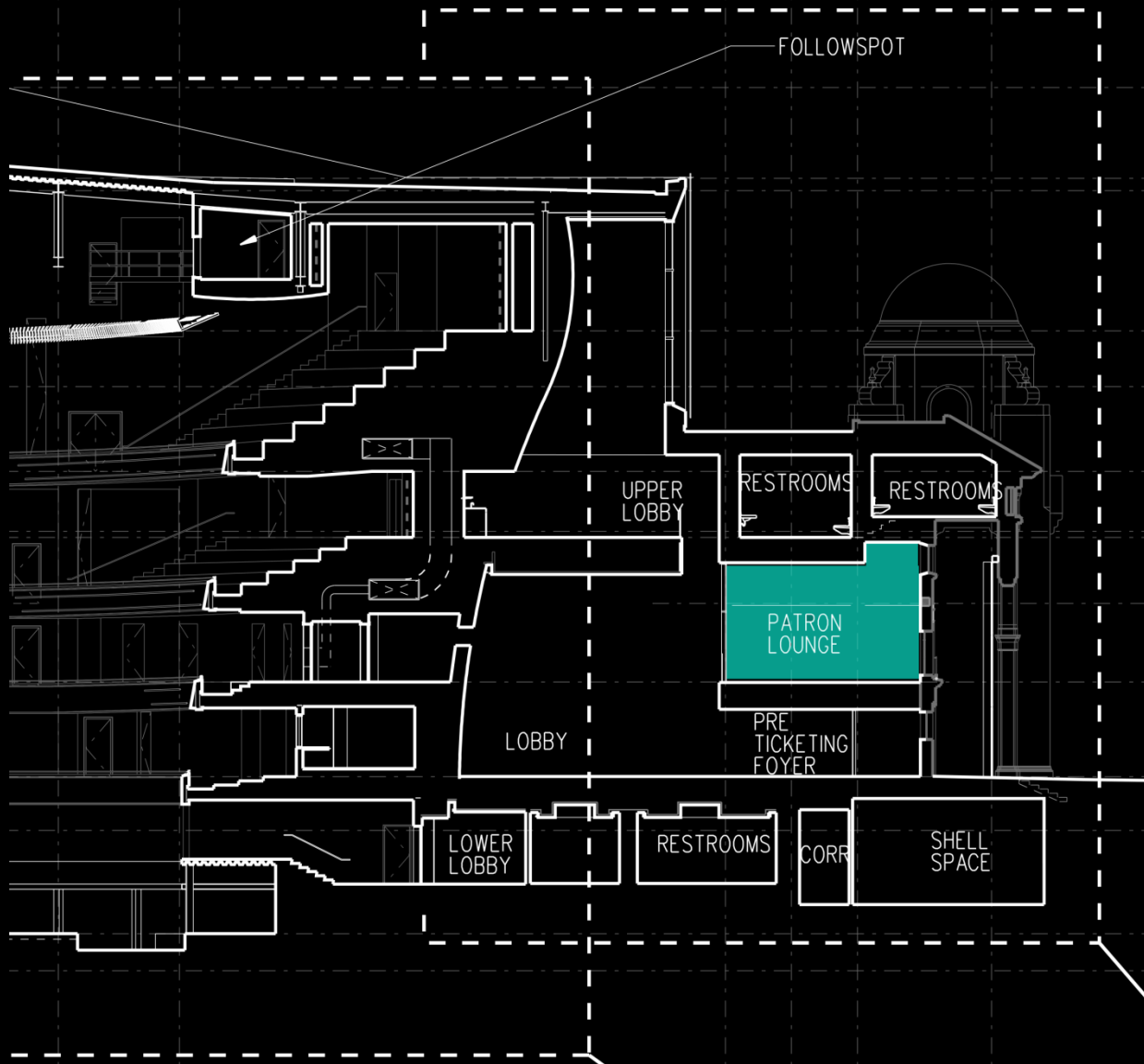
MAIN LOBBY - MASTER SKETCH "PERSPECTIVE"



The background is a detailed architectural floor plan of a building, rendered in a light gray color against a dark background. The plan shows various rooms, corridors, and structural elements. A specific rectangular area at the bottom center of the plan is highlighted in a solid teal color. Overlaid on this plan is the text 'PATRON'S LOUNGE' in a large, white, bold, sans-serif font, centered horizontally and vertically.

PATRON'S LOUNGE



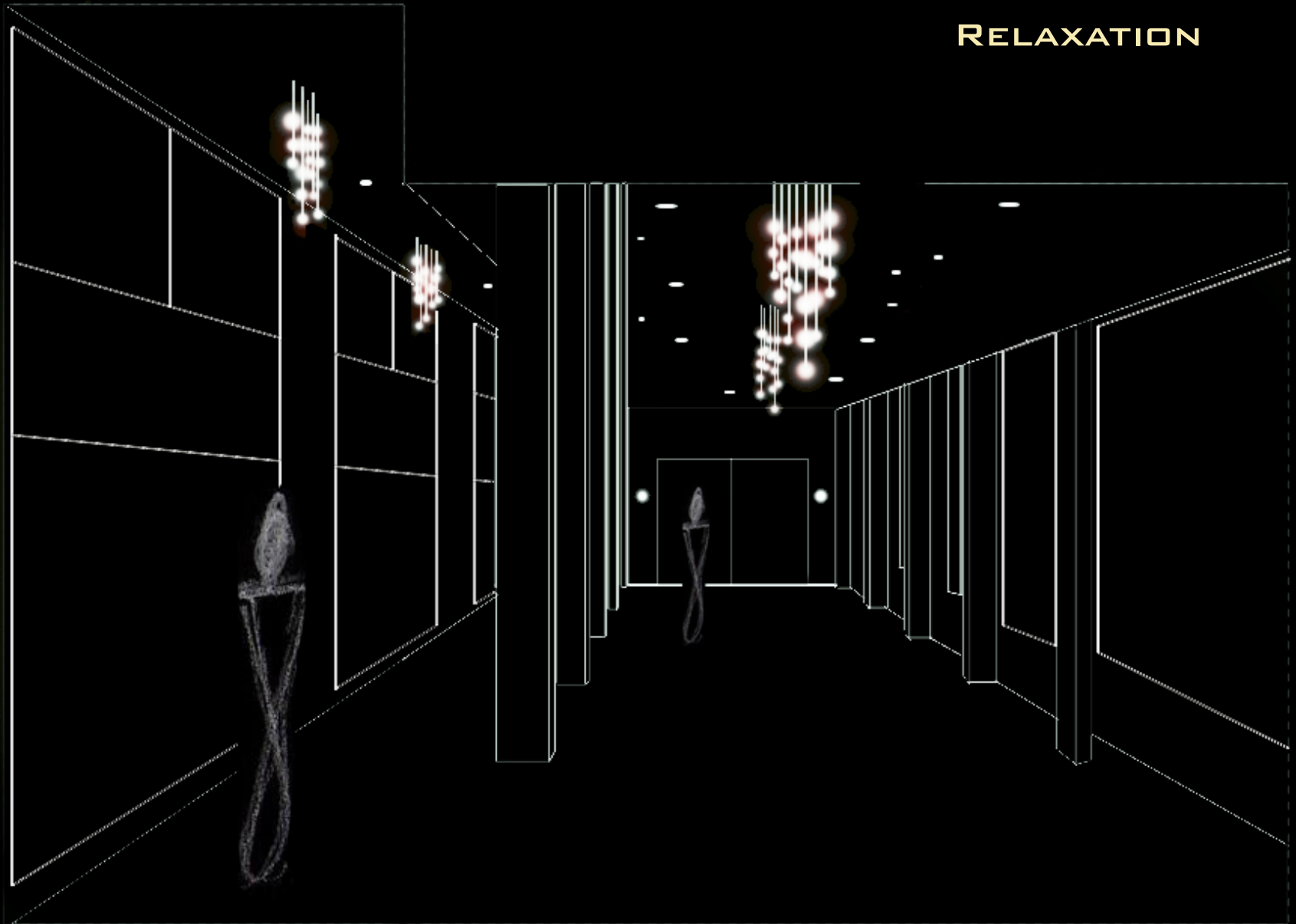


C B A

1
A640

1
A630

RELAXATION



RELAXATION



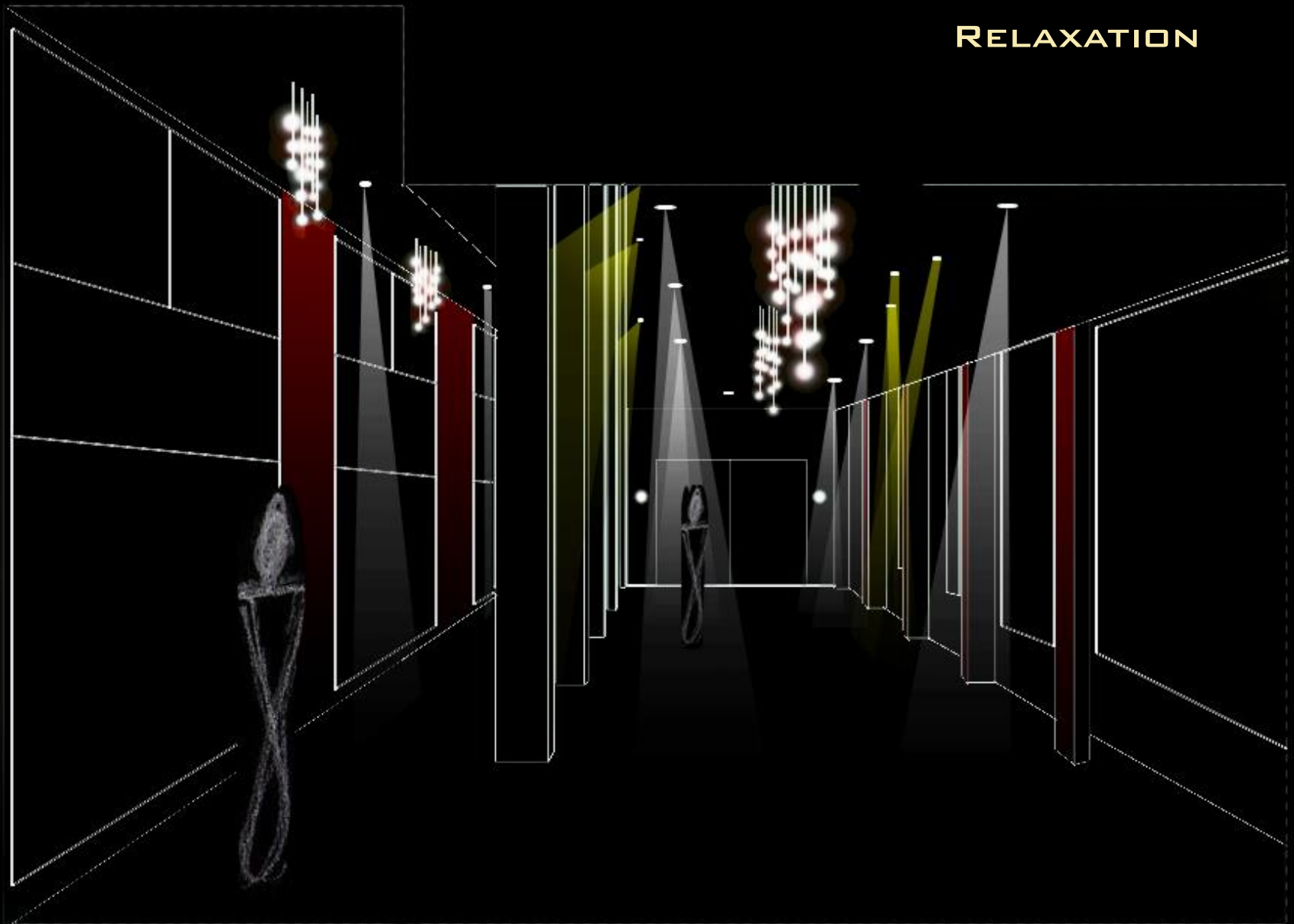
RELAXATION

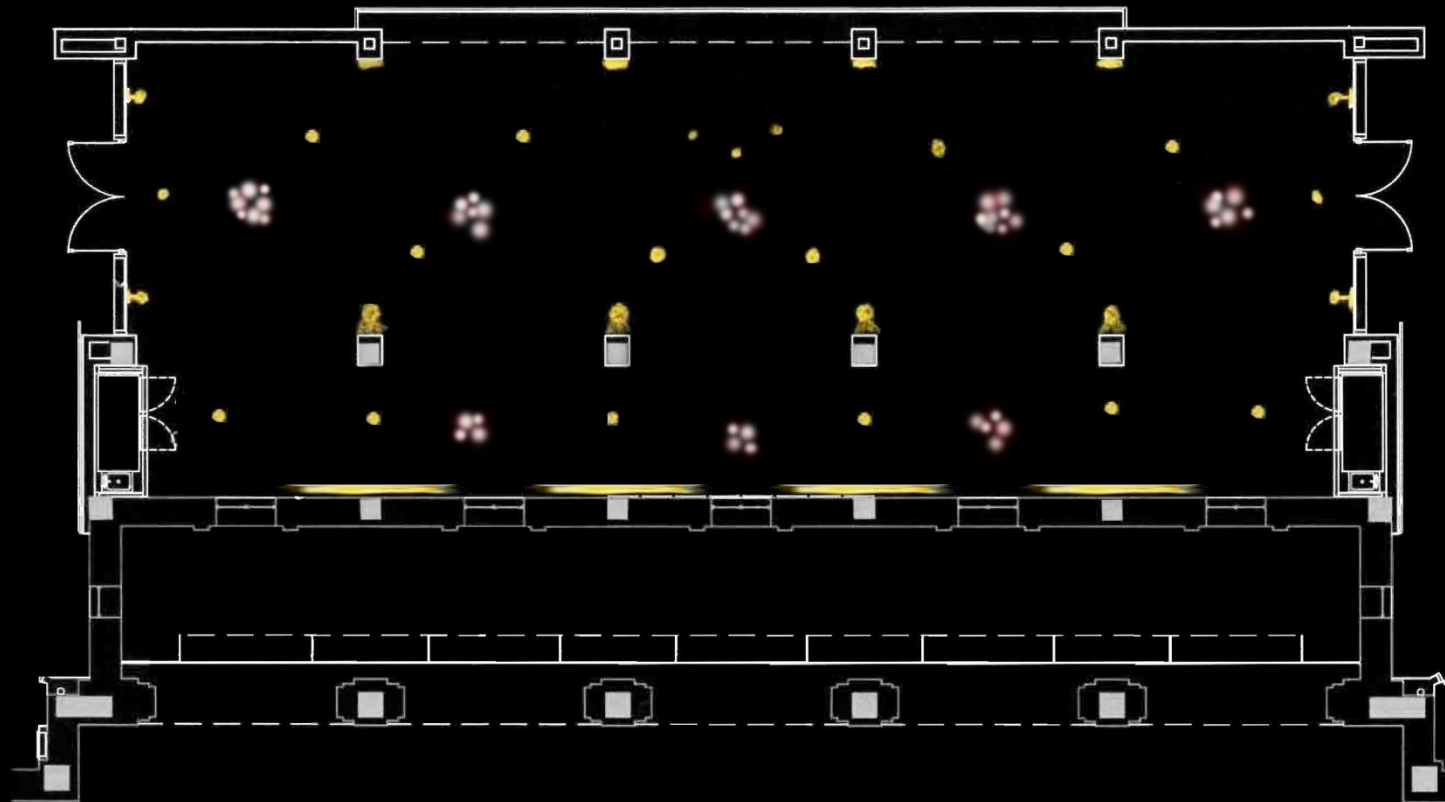


RELAXATION

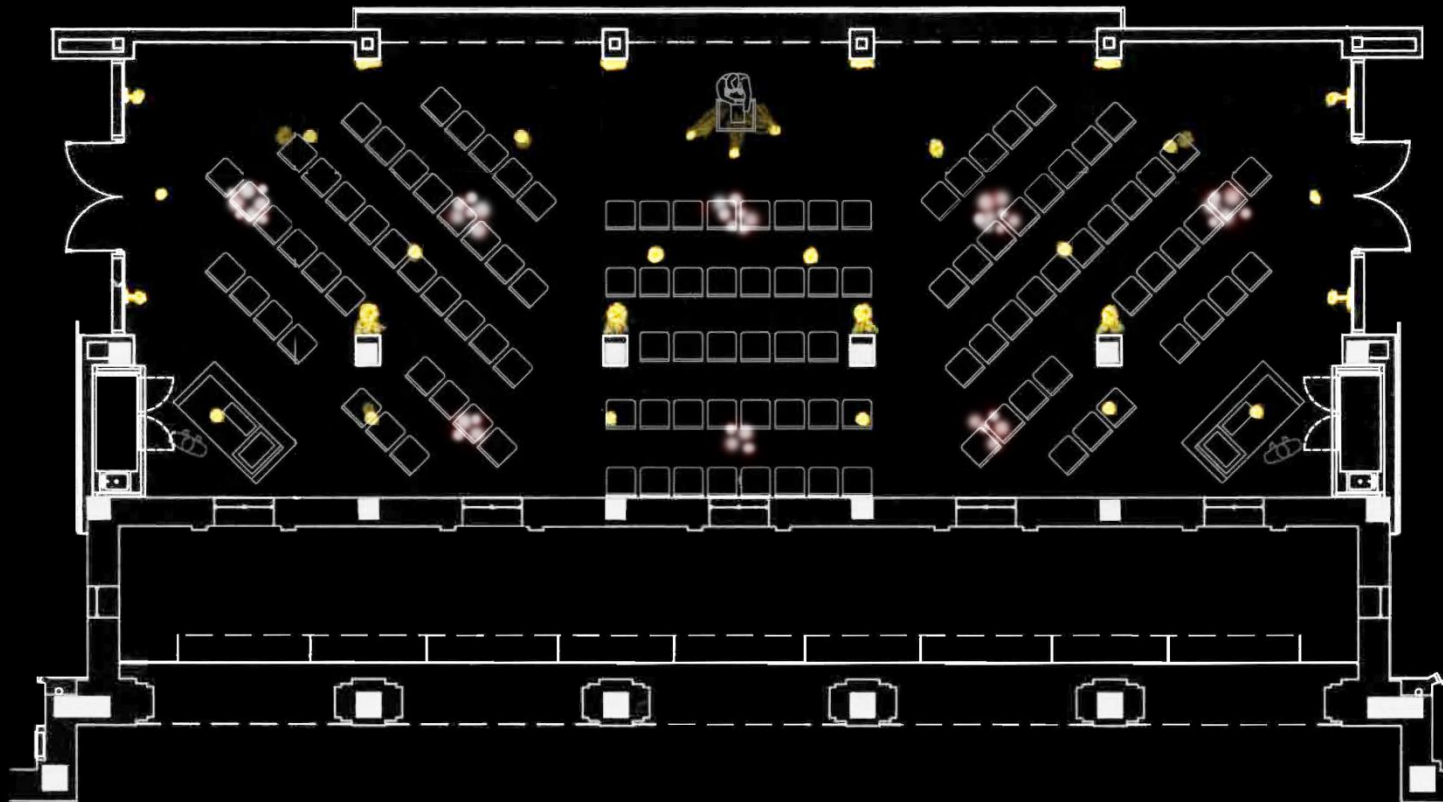


RELAXATION

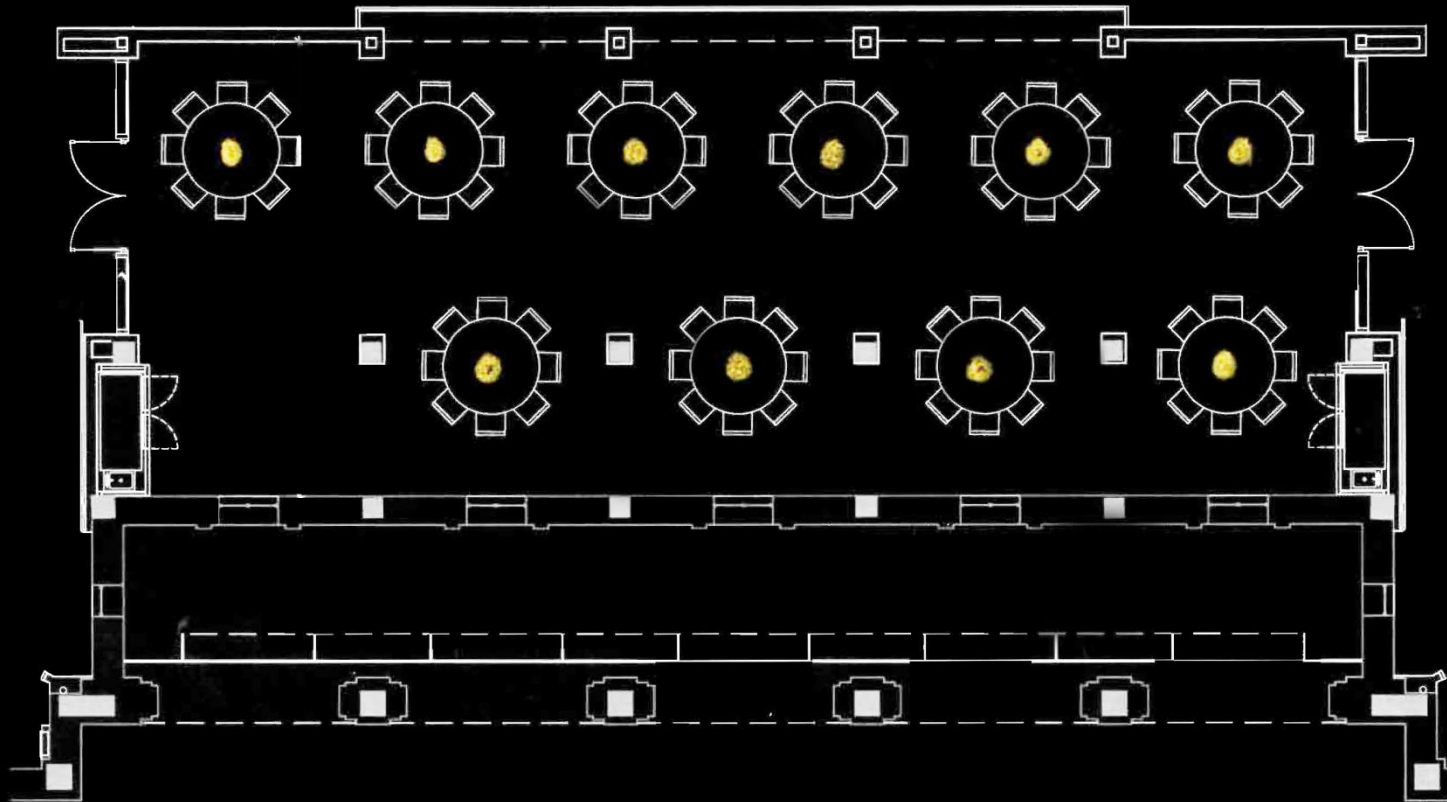




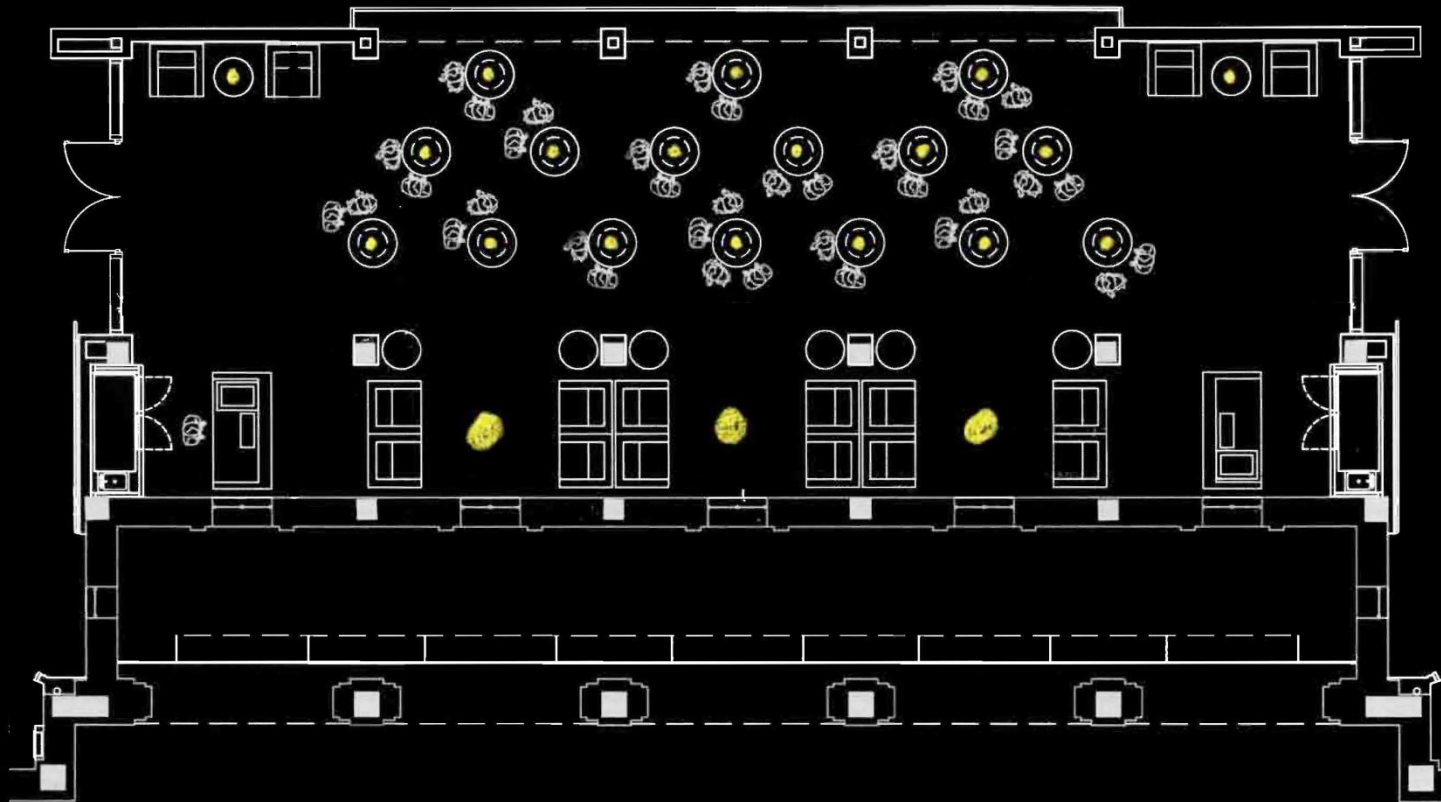
LECTURE LAYOUT



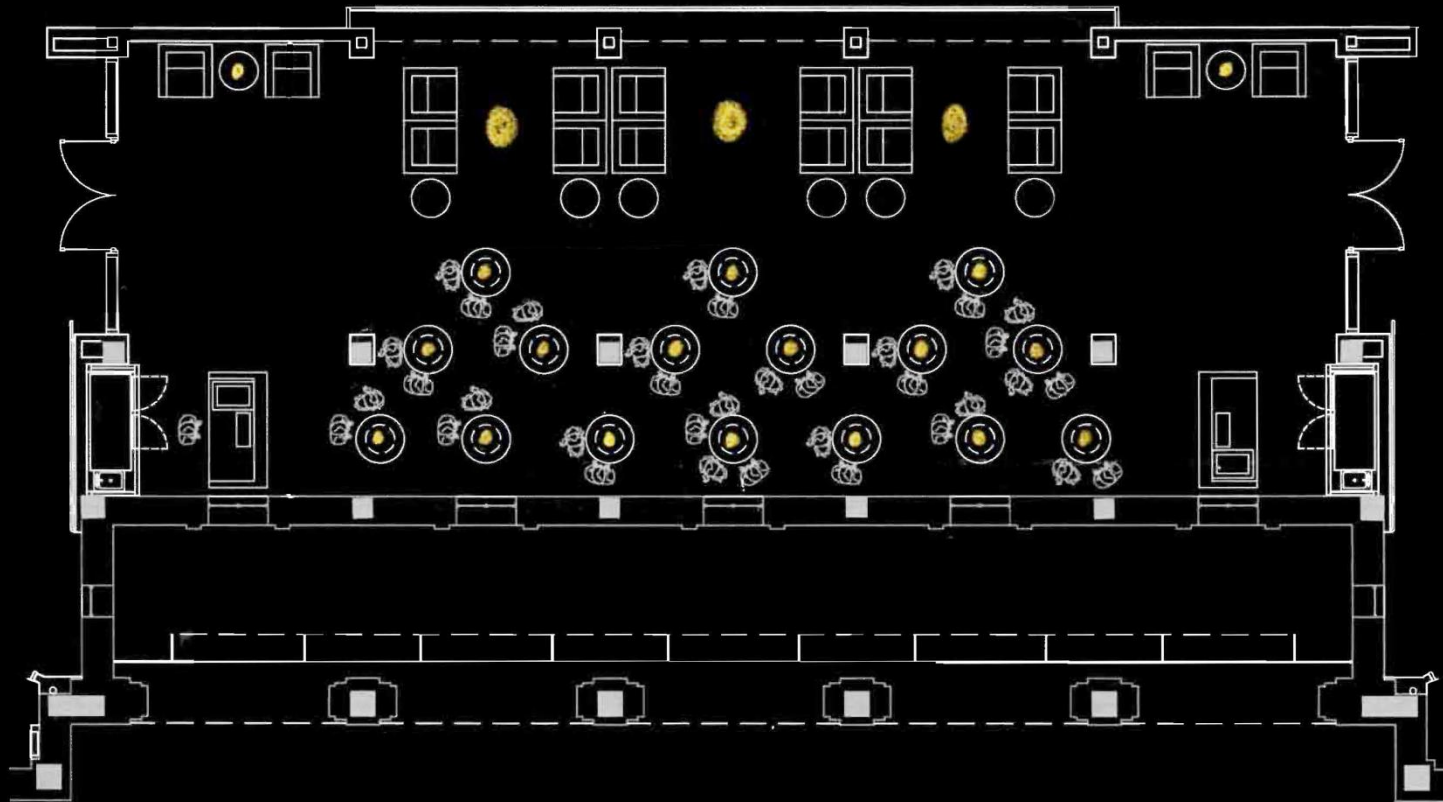
BANQUET LAYOUT



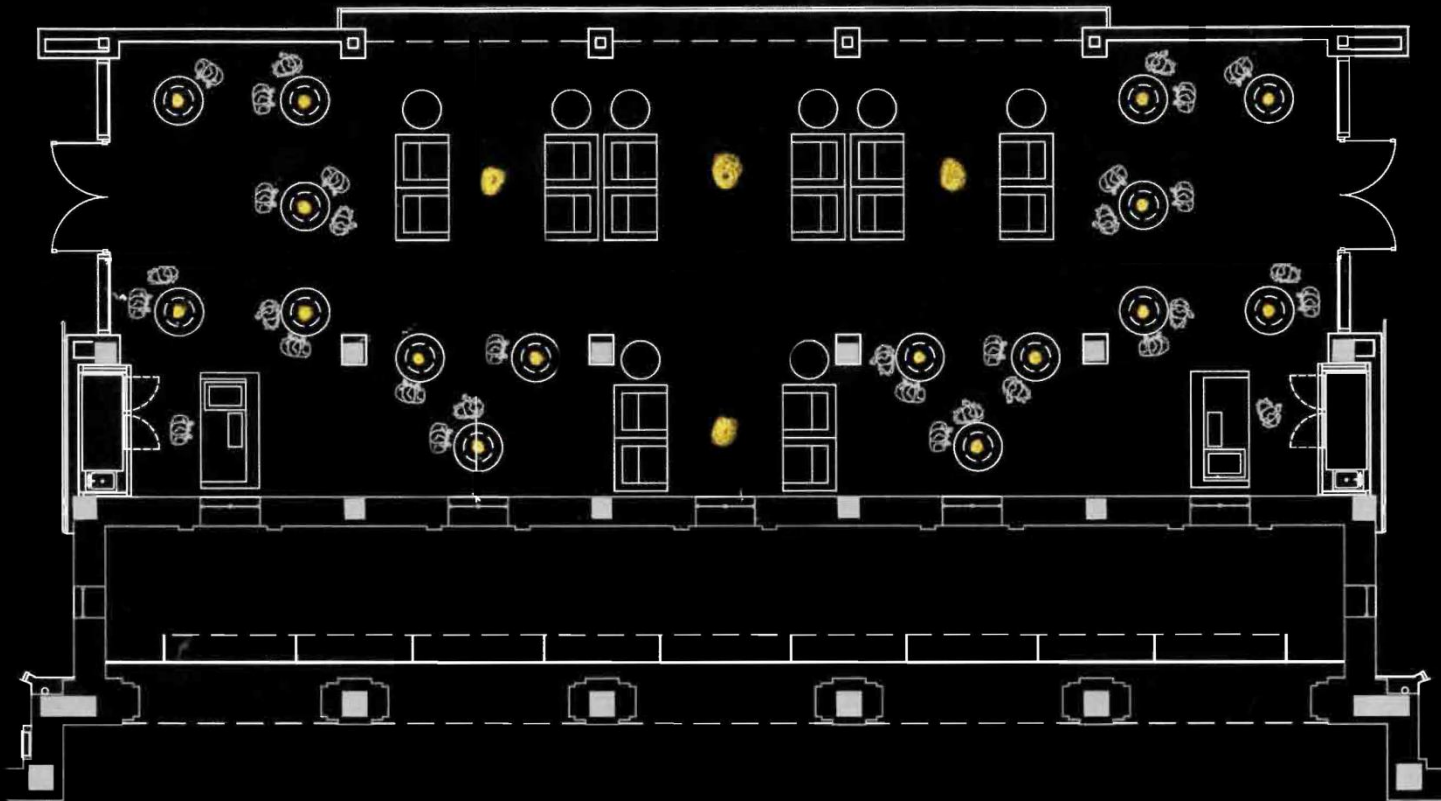
COCKTAIL LAYOUT 1



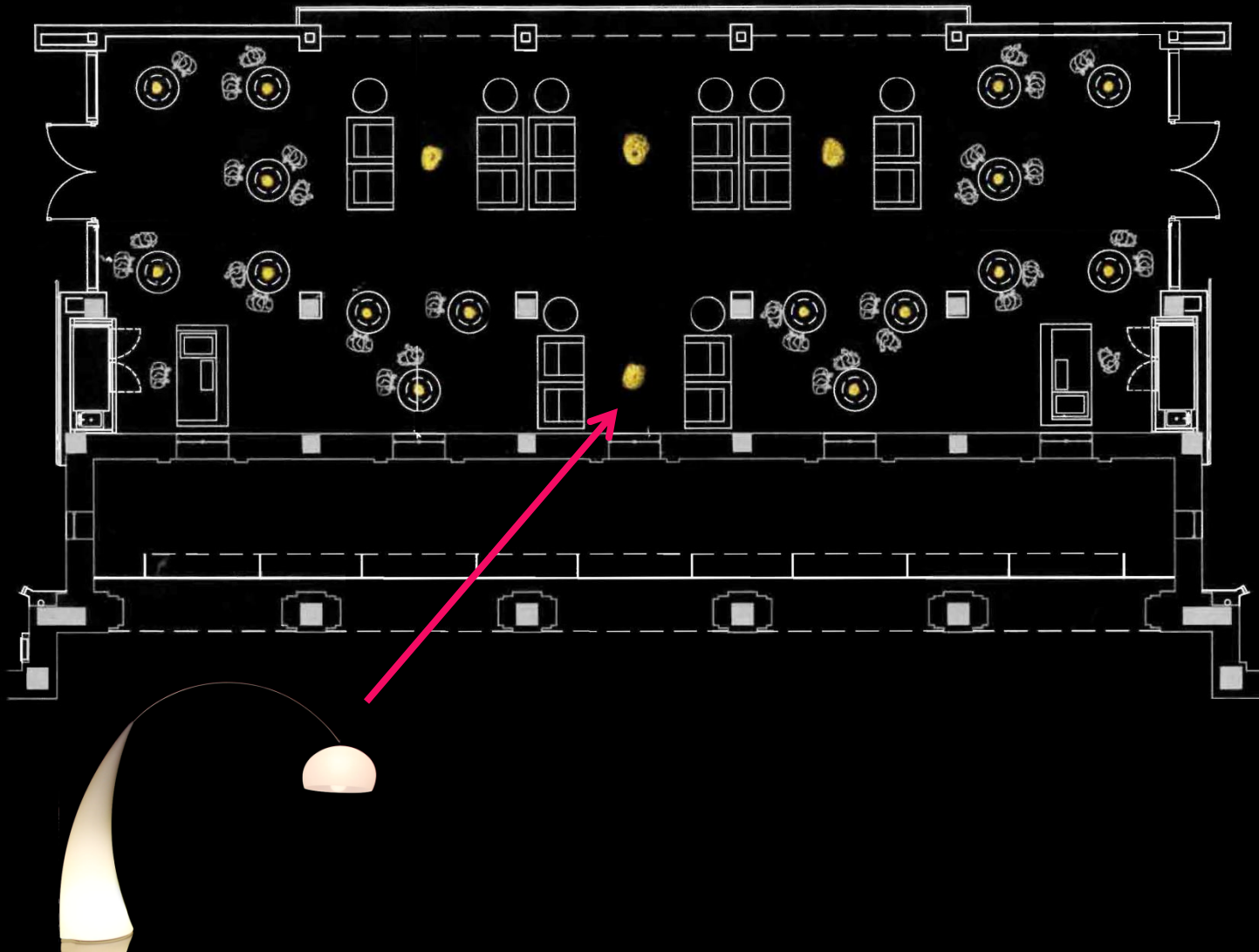
COCKTAIL LAYOUT 2

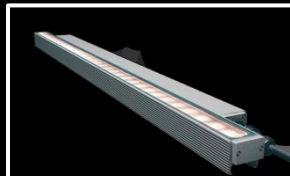
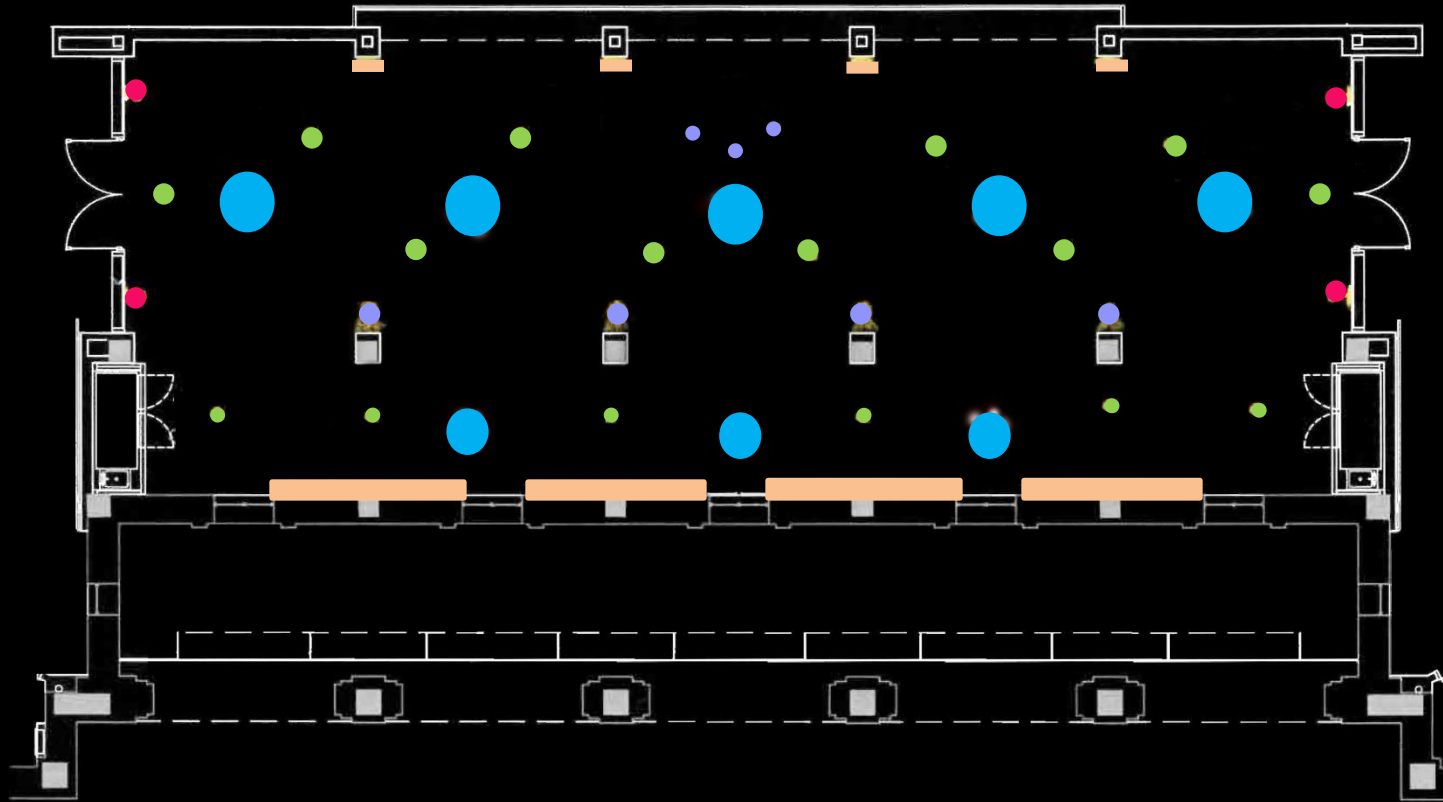


COCKTAIL LAYOUT 3



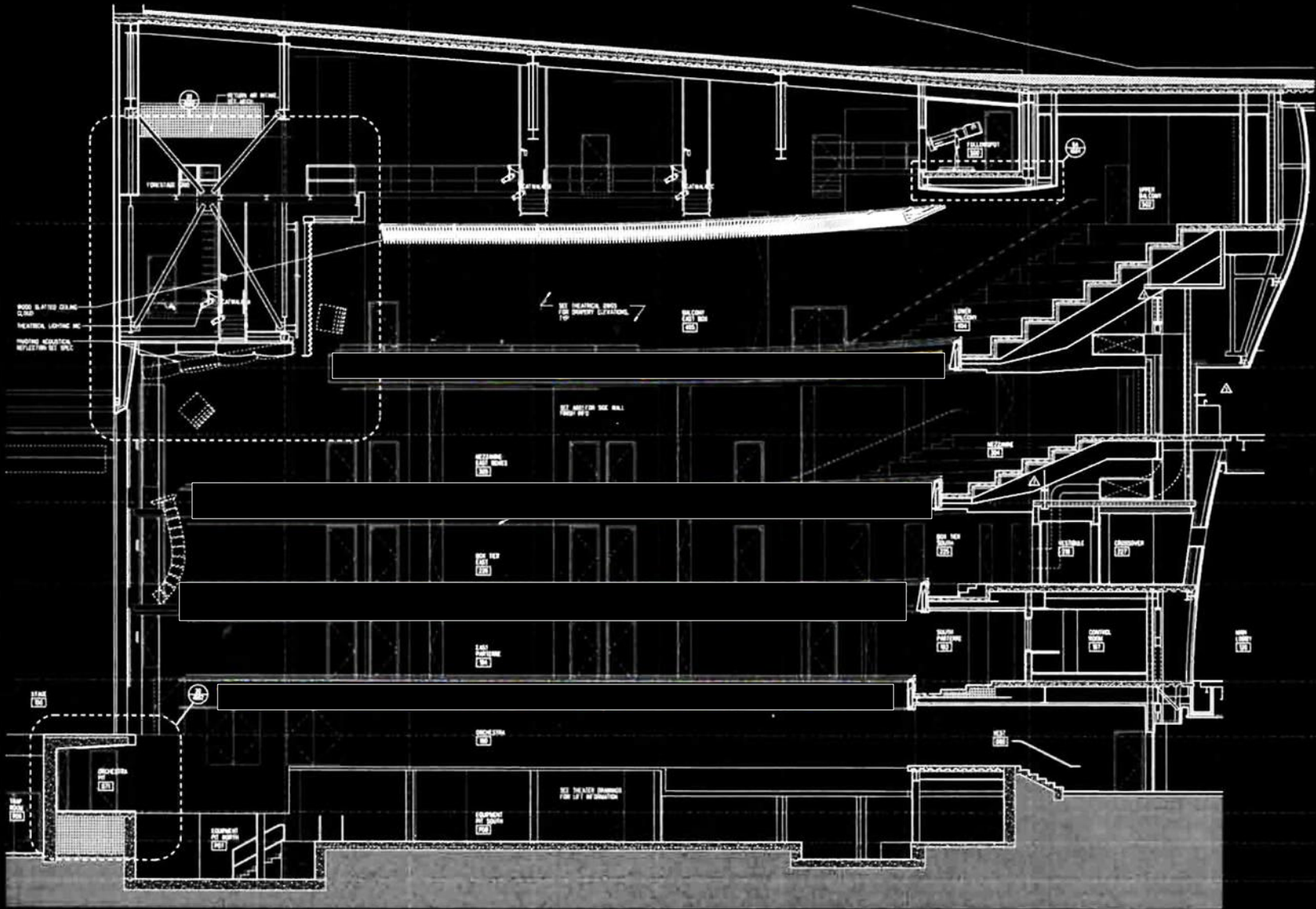
COCKTAIL LAYOUT 3

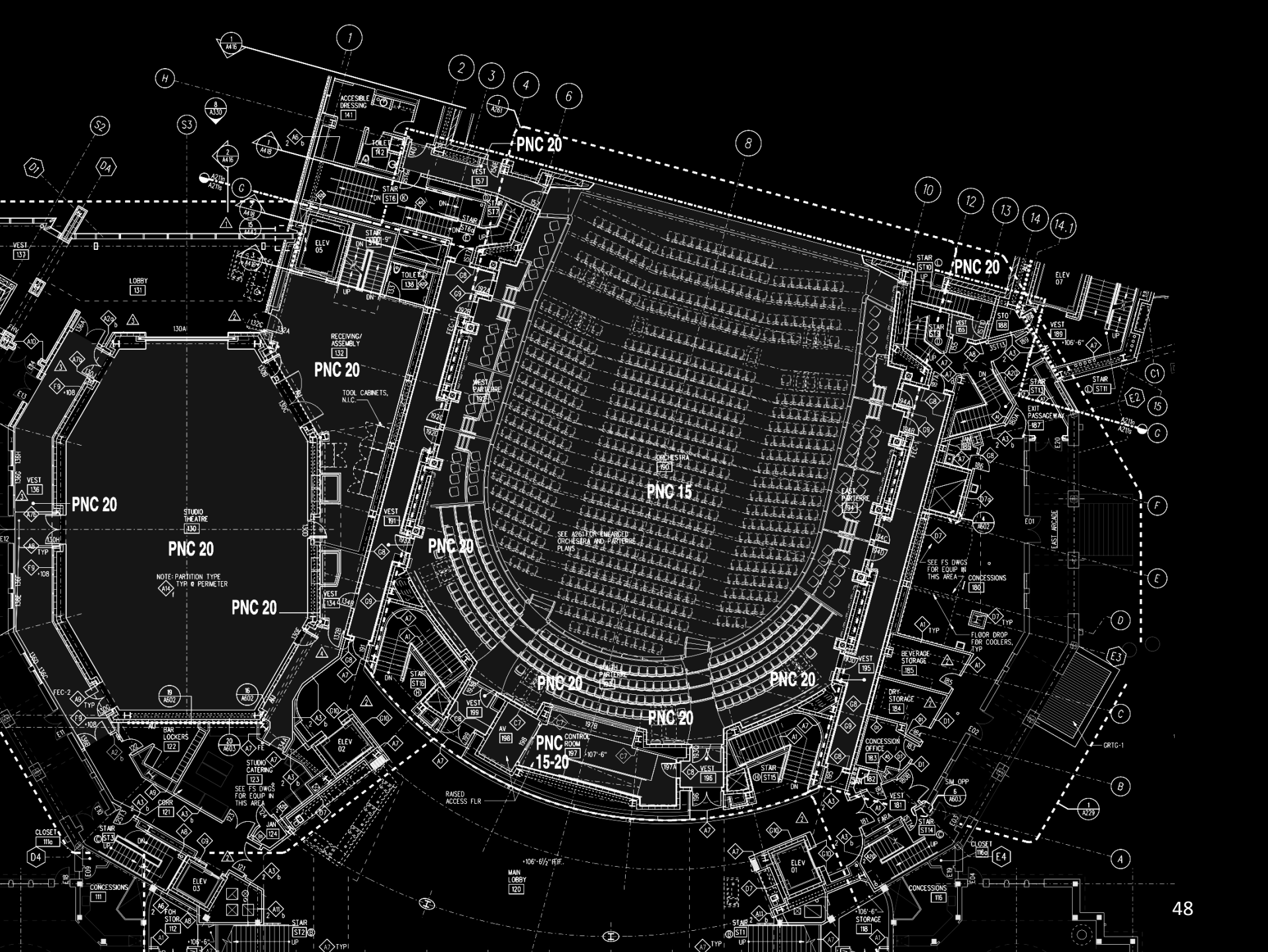




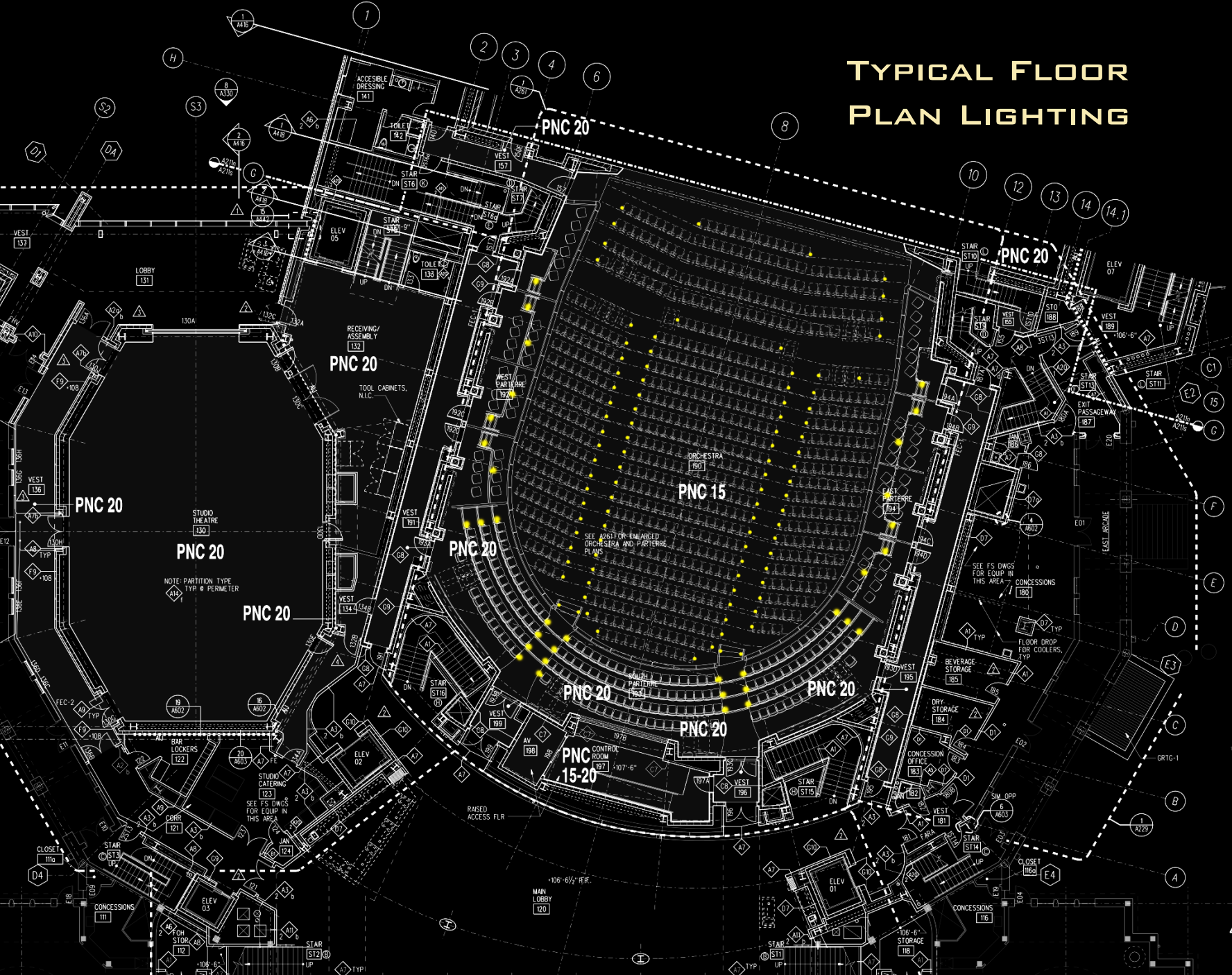
The background is a dark, semi-transparent architectural floor plan of a building. A central rectangular area is highlighted in a vibrant pink color. The text 'MAIN AUDITORIUM' is overlaid on this pink area in a bold, white, sans-serif font.

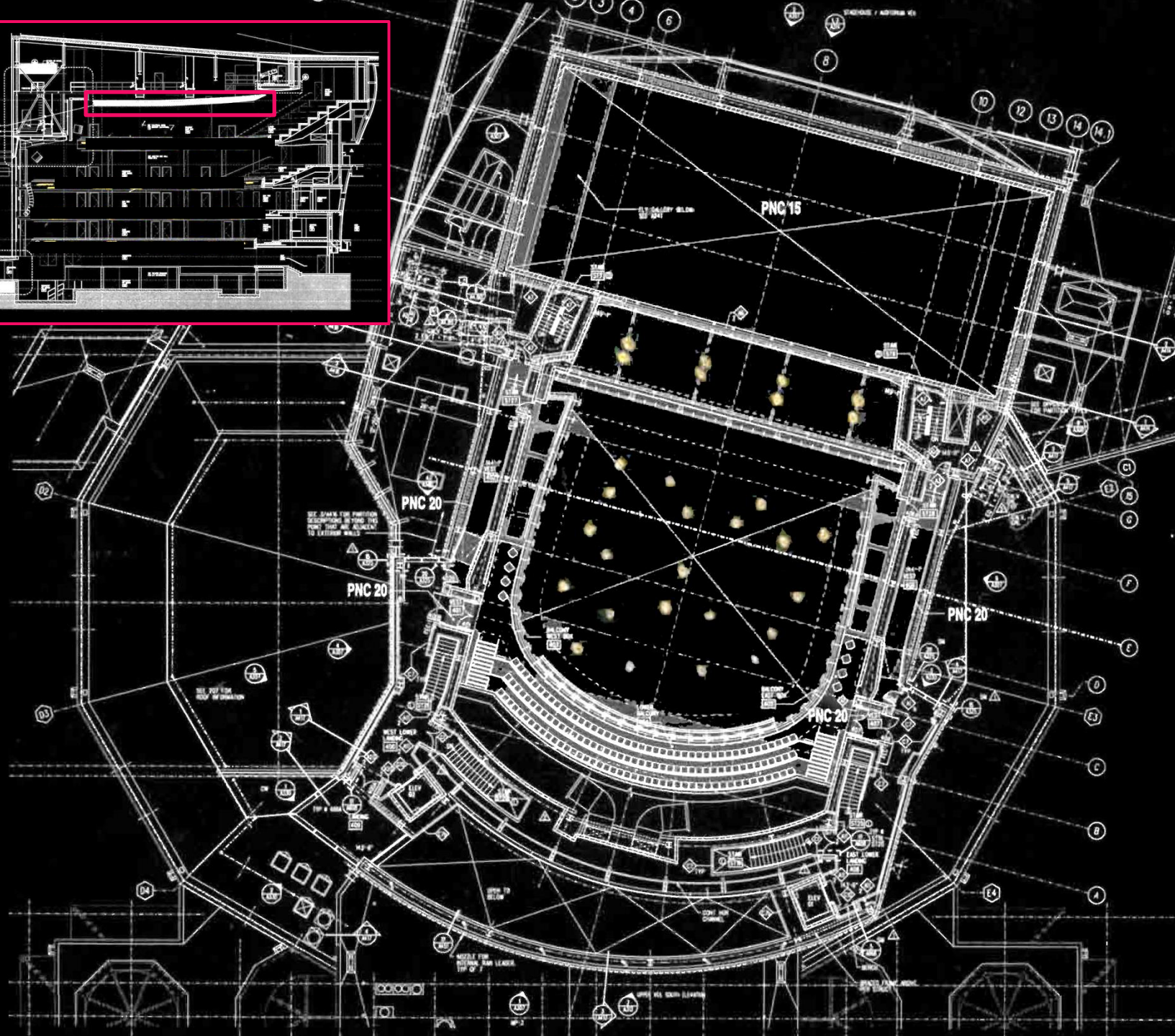
MAIN AUDITORIUM

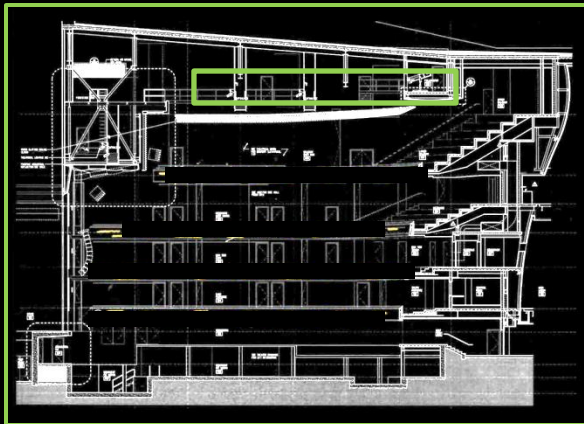




TYPICAL FLOOR PLAN LIGHTING







BALCONY

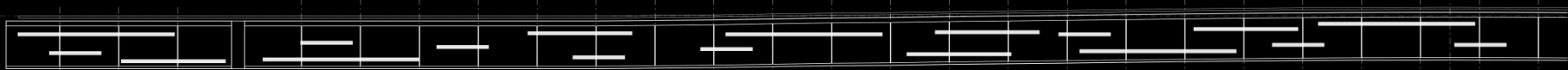
BALCONY EAST



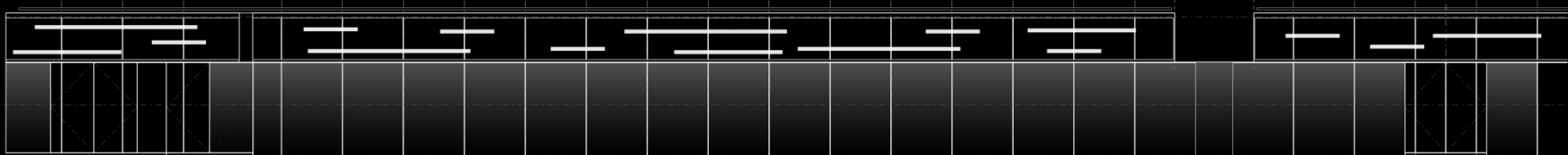
MEZZANINE EAST



BOX TIER EAST



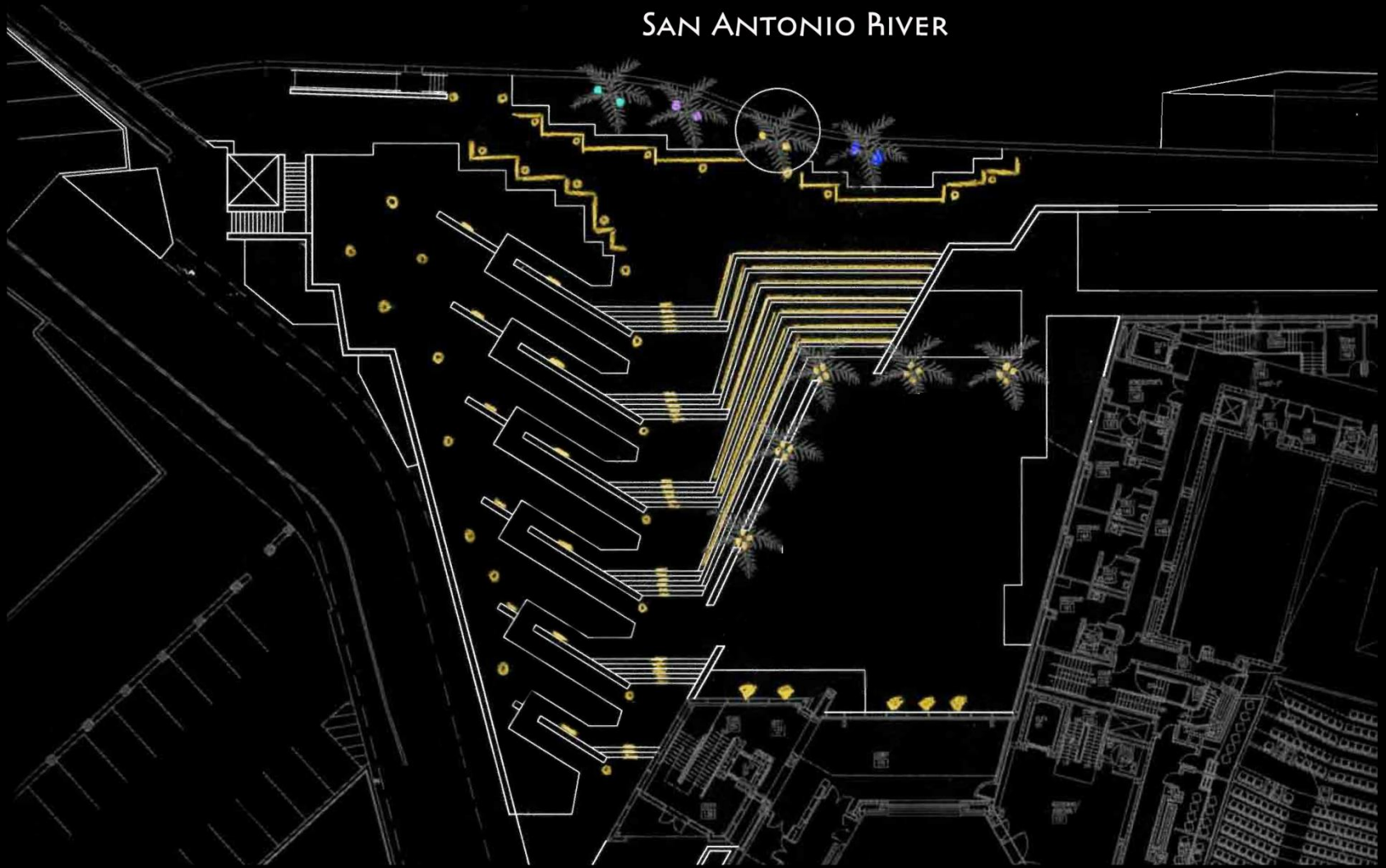
EAST PARTERRE



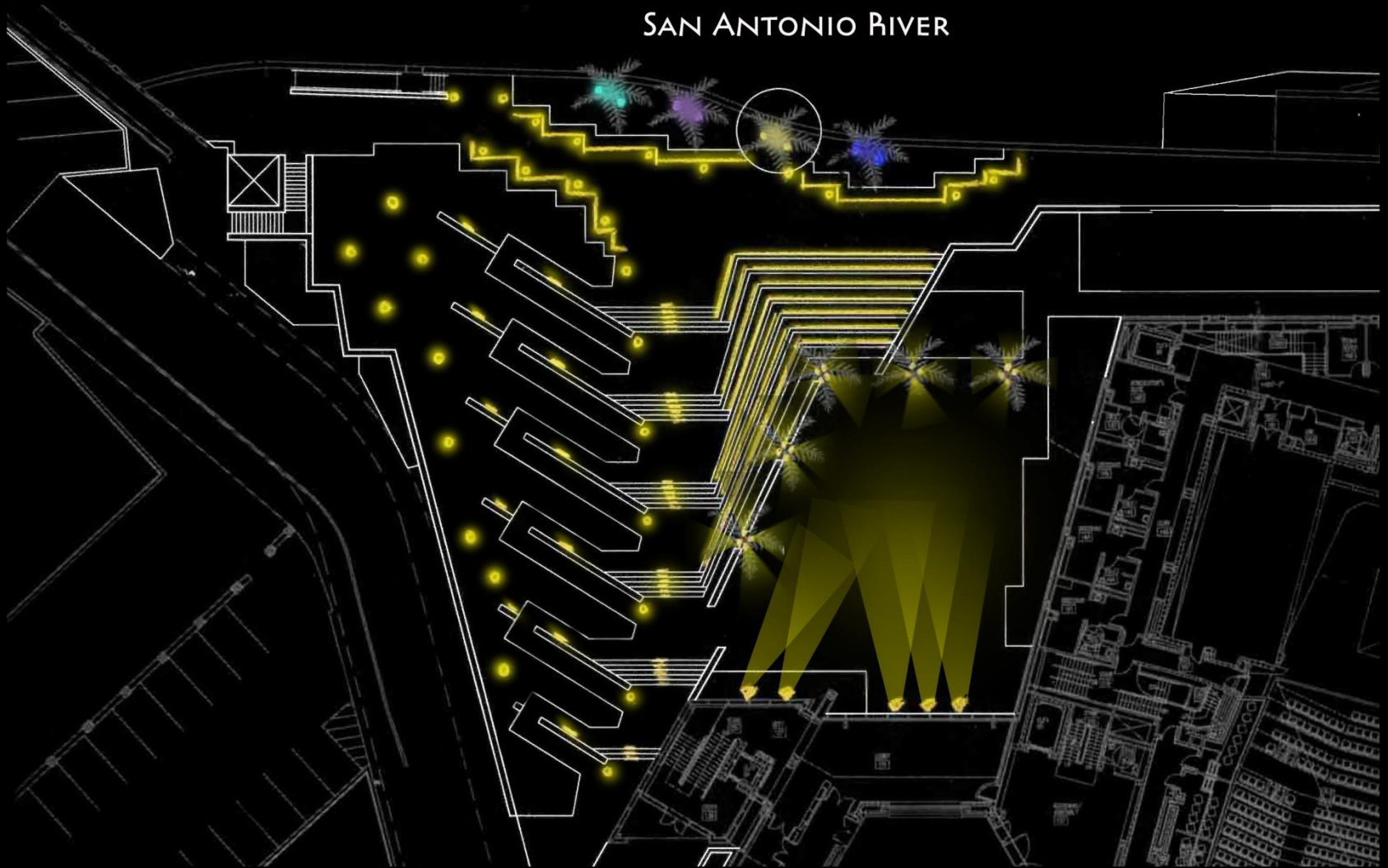
An architectural floor plan of a building, rendered in a dark grey color. A specific area in the upper-left quadrant of the plan is highlighted with a bright yellow color. The highlighted area is roughly rectangular with some irregular edges, suggesting an outdoor plaza or a large open space. The rest of the plan shows various rooms, corridors, and structural elements.

EVENT PLAZA

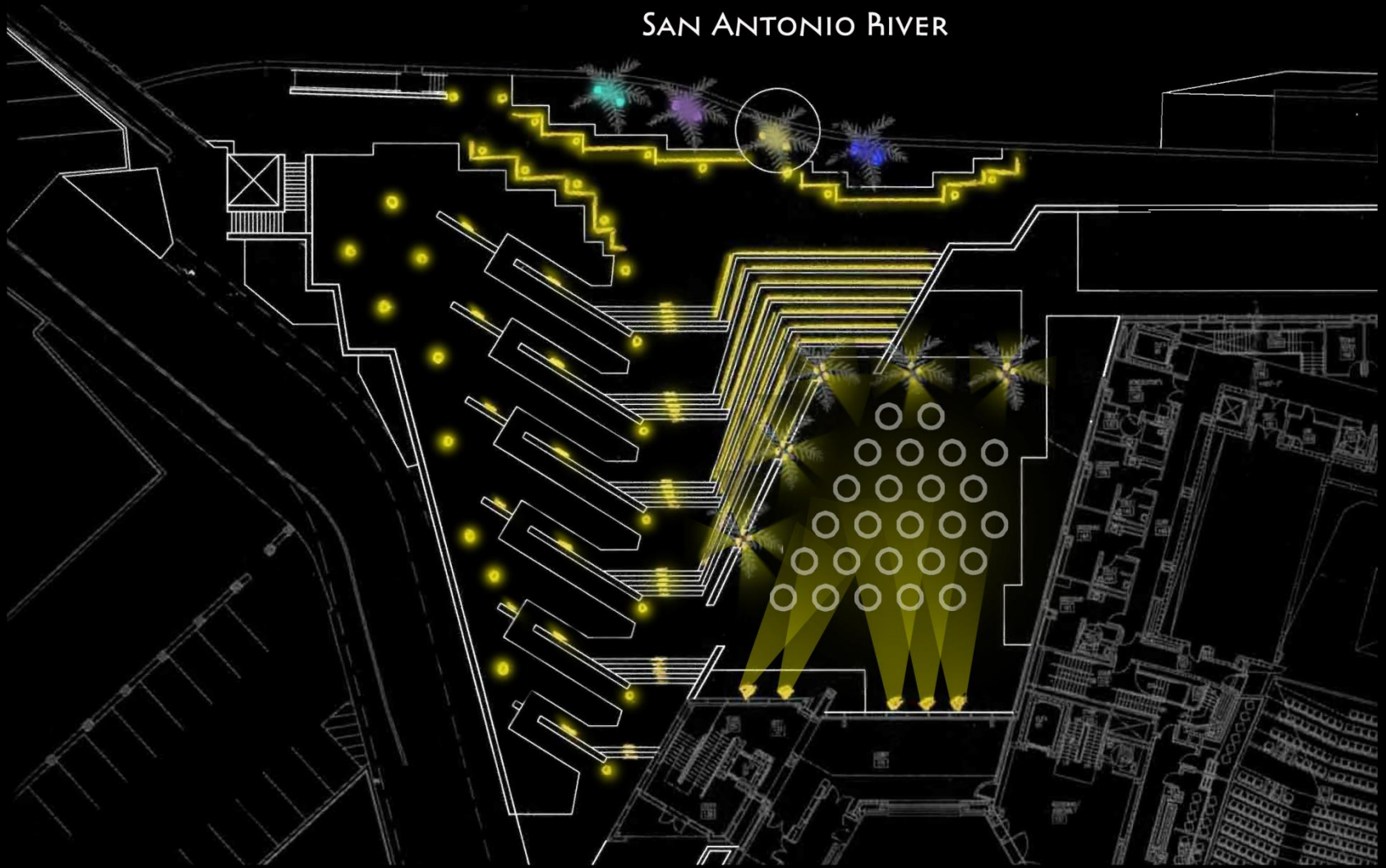
SAN ANTONIO RIVER



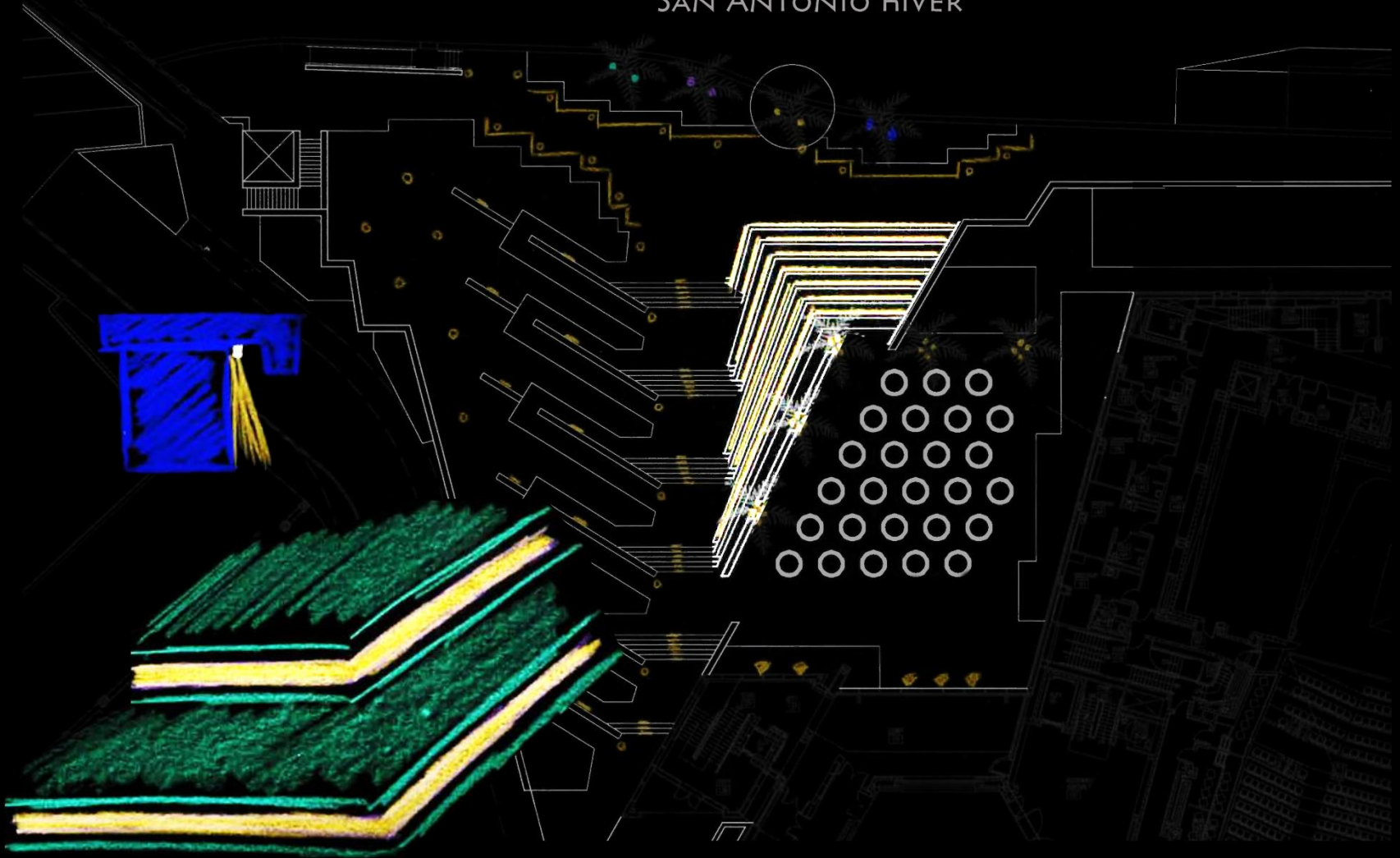
SAN ANTONIO RIVER



SAN ANTONIO RIVER



SAN ANTONIO RIVER





TOBIN CENTER FOR THE PERFORMING ARTS



Laura Ashley A. Alferes | Lighting Schematic Design Presentation | 11.11.13